



Draft Corporate Plan 2026-2031

Have your say as we develop our vision and mission to serve our communities over the next five years.



For more information
(07) 5424 4000
mail@somerset.qld.gov.au

Have Your Say
somerset.qld.gov.au/2026DraftCorporatePlan

Our Vision

Thriving communities - country lifestyle.



Our Mission

Delivering great outcomes and services for our communities.



Our Core Values

Excellence

We take pride in our work and always strive to improve.

Positive Interactions

We build trust through positive interactions.

Community Champions

The community is at the heart of everything we do.

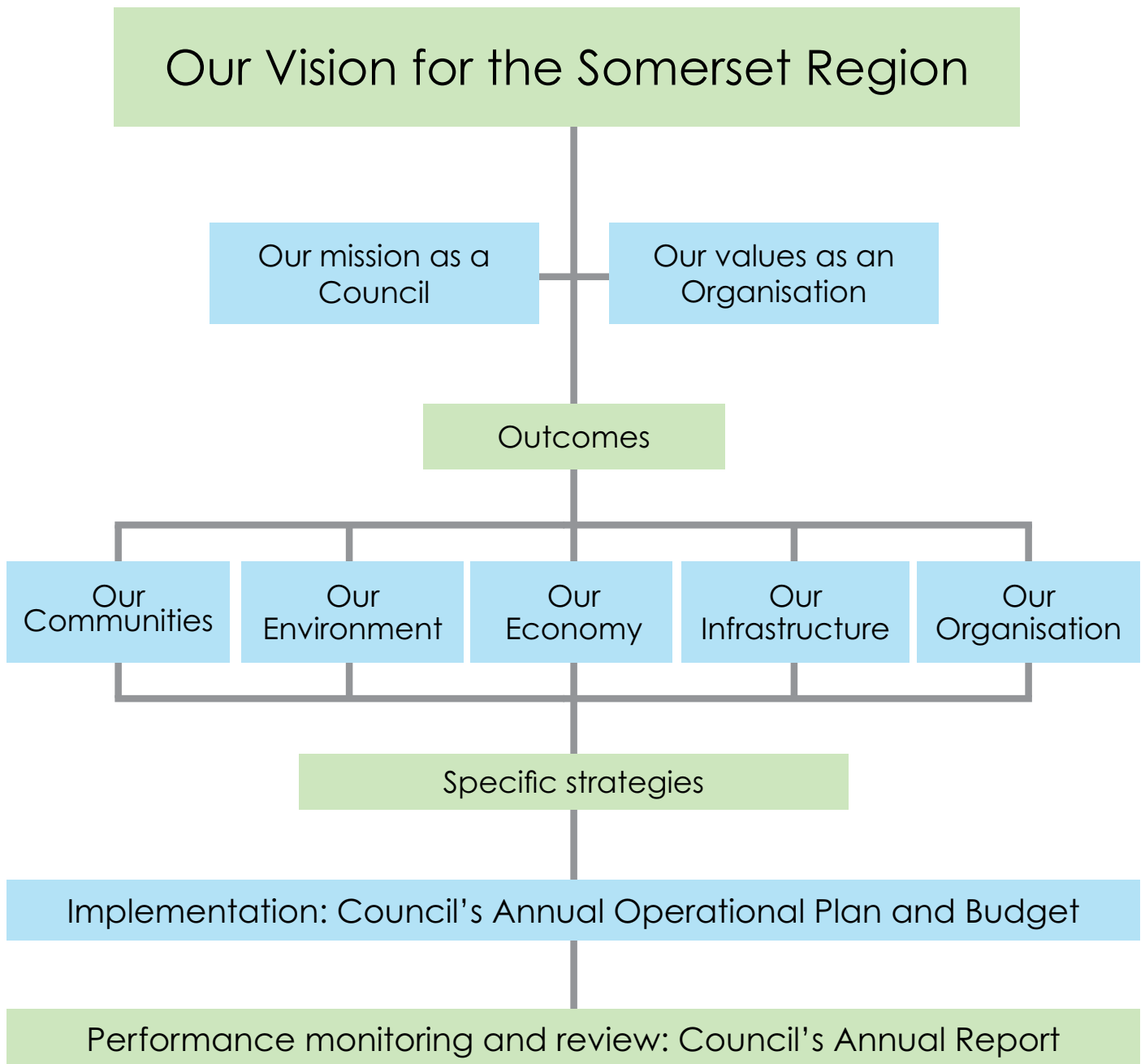
Empowered Workforce

We innovate, openly collaborate and work as a team.

Safety STAR (Stop, Think, Act, Review)

We create an environment where we care for ourselves, each other and our community.

Our Planning Framework



Our Strategic Directions

Our Communities

integrated and welcoming with something for everyone

Support community wellbeing through access to sport, recreation, open spaces and active lifestyles.

Facilitate and advocate for community access to social services including health, education, housing, public transport, aged care and services for families, children and youth.

Encourage and deliver a range of inclusive and accessible arts, culture and learning opportunities.

Enable meaningful community participation, celebrate cultural diversity and promote social cohesion.

Communicate effectively to facilitate meaningful engagement with the community.

Our Environment

where the natural environment, scenic beauty and country lifestyle are valued and protected

Responsibly manage the environmental impact of Council's operations through sustainable practices.

Improve waste management practices to achieve local and regional outcomes.

Promote incentivised approaches to manage biosecurity to benefit agriculture and the environment.

Protect and enhance Somerset's natural environment, biodiversity and waterways for current and future generations.

Promote sustainable land use and resource stewardship that balances rural productivity, growth and conservation.



Our Economy

that embraces opportunities and thrives

Actively develop strategic partnerships with industry, communities and governments to secure key social and economic needs.

Encourage and attract desirable tourism to secure local business and employment opportunities.

Strengthen a diverse and resilient regional economy that supports agriculture, small business and emerging industries.

Promote and position Somerset as an attractive and investment-ready region.

Capitalise on major infrastructure projects and opportunities, including Brisbane 2032, to deliver lasting benefits for the region.

Deliver catalyst enabling projects to encourage economic growth.

Our Infrastructure

where planning and design look to the future

Plan and deliver infrastructure that supports growth for the long-term.

Pursue initiatives to improve infrastructure disaster resilience and enhance adaptability to a changing climate.

Enhance the longevity and performance of infrastructure assets through proactive maintenance that minimises whole of life costs.

Develop and maintain a robust asset management system anticipating growth and aging assets.

Develop a growth management plan and future-focused planning scheme.

Improve liveability by creating welcoming and accessible public spaces, and community infrastructure.



Our Organisation

well governed, well-managed and operates effectively and sustainably

Actively manage risk to protect and future-proof our organisation.

Enhance efficiency and effectiveness of service delivery to benefit customers, residents and visitors.

Invest in and empower our people through workforce planning and skills development for a future-ready organisation.

Develop and manage contemporary corporate systems to leverage technological and data advancements.

Maintain strong governance, integrity and transparent decision making that builds community trust.

Ensure long-term financial sustainability through responsible management.

Advocate to State and Federal Governments, and work collaboratively with stakeholders, to secure investment, policy alignment and improved outcomes for the region.

