






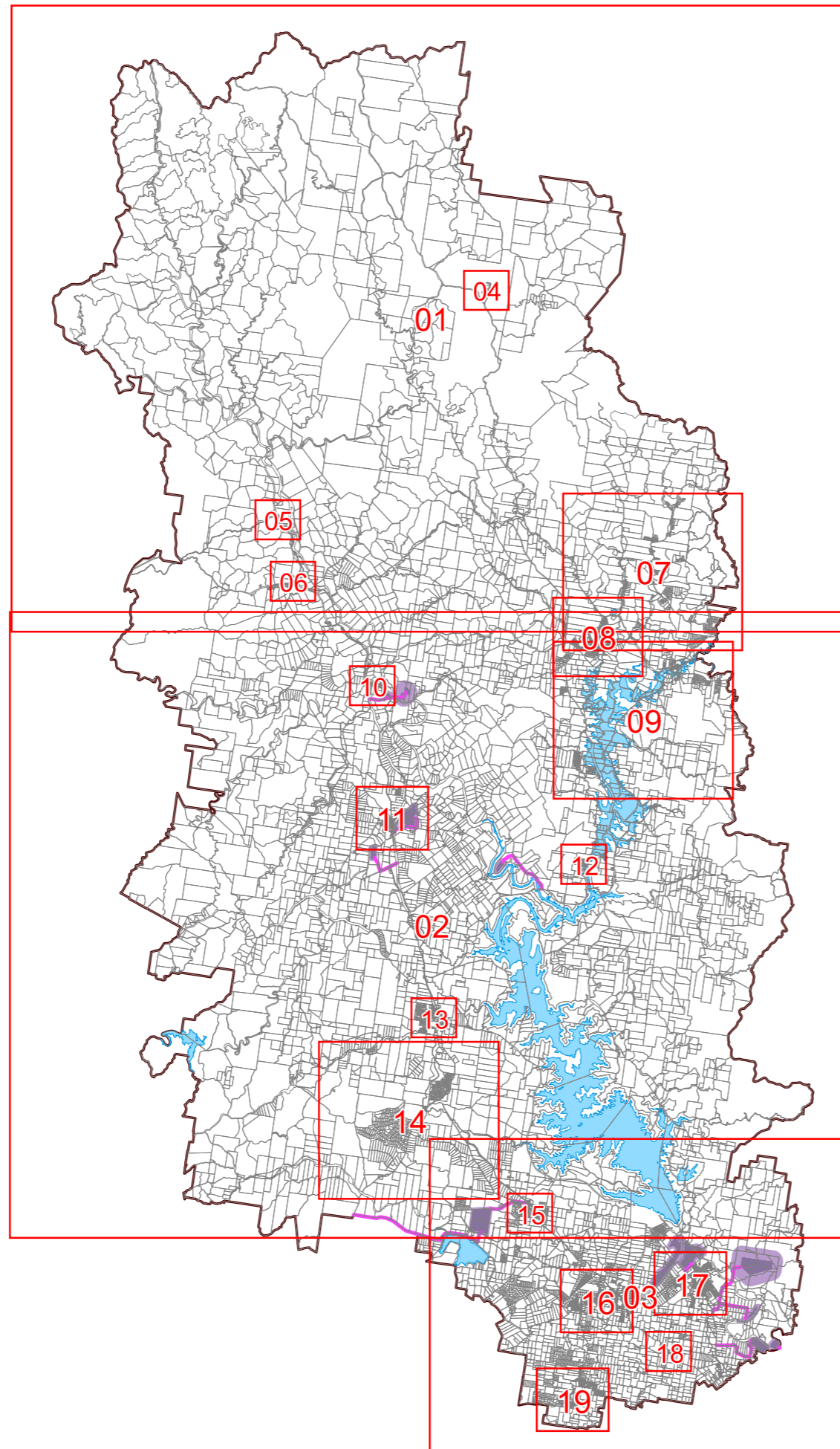


EXTRACTIVE RESOURCES OVERLAY MAP

Legend

-  KRA Resource Processing
-  KRA Separation Area
-  KRA Transport Route
-  KRA Transport Separation Area
-  Cadastre (May 2025)
-  Waterbody
-  Somerset Regional Council Boundary



Effective: XX XXXXXXXX XXXX

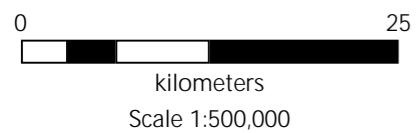
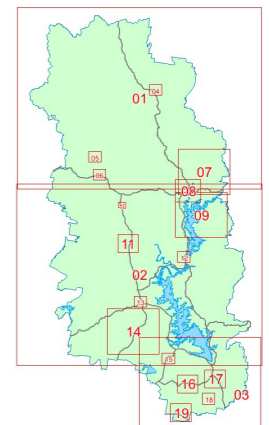
Disclaimer

Whilst every care is taken to ensure the accuracy of this product, neither the Somerset Regional Council or the State of Queensland make any representations or warranties about its accuracy, reliability, completeness or suitability for any particular purpose and disclaims all responsibility and all liability (including without limitation, liability in negligence) for all expenses, losses, damages (including indirect or consequential damage) and costs that may occur as a result of the product being inaccurate or incomplete in any way or for any reason.

All data depicted on this map has been sourced from either the Somerset Regional Council or the State of Queensland from the latest datasets at the time of map compilation.








Crown & Council Copyright Reserved.

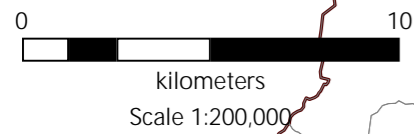
Sheet Index



EXTRACTIVE RESOURCES OVERLAY MAP

Legend

-  KRA Resource Processing
-  KRA Separation Area
-  KRA Tansport Route
-  KRA Transport Separation Area
-  Cadastre (May 2025)
-  Waterbody
-  Somerset Regional Council Boundary



Effective: XX XXXXXXXXXX XXXX

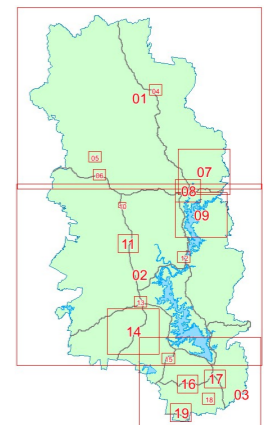
Disclaimer

Whilst every care is taken to ensure the accuracy of this product, neither the Somerset Regional Council or the State of Queensland make any representations or warranties about its accuracy, reliability, completeness or suitability for any particular purpose and disclaims all responsibility and all liability (including without limitation, liability in negligence) for all expenses, losses, damages (including indirect or consequential damage) and costs that may occur as a result of the product being inaccurate or incomplete in any way or for any reason.

All data depicted on this map has been sourced from either the Somerset Regional Council or the State of Queensland from the latest datasets at the time of map compilation.








Crown & Council Copyright Reserved.

Sheet Index



EXTRACTIVE RESOURCES OVERLAY MAP

Legend

-  KRA Resource Processing
-  KRA Separation Area
-  KRA Transport Route
-  KRA Transport Separation Area
-  Cadastre (May 2025)
-  Waterbody
-  Somerset Regional Council Boundary

Effective: XX XXXXXXXX XXXX

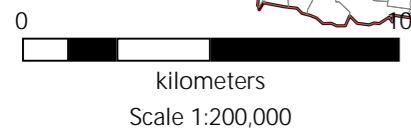
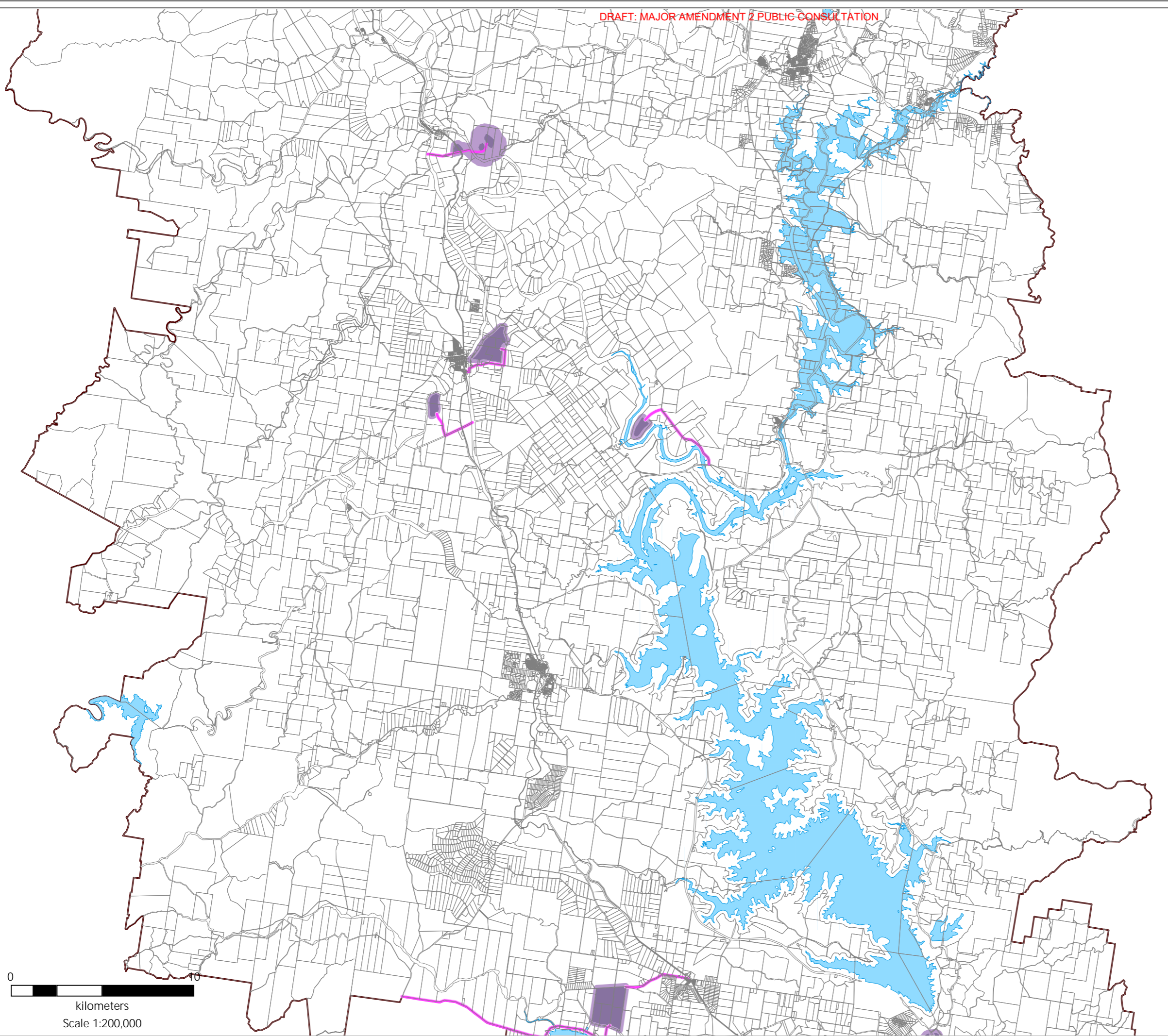
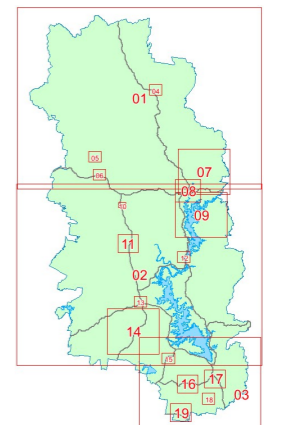
Disclaimer

Whilst every care is taken to ensure the accuracy of this product, neither the Somerset Regional Council or the State of Queensland make any representations or warranties about its accuracy, reliability, completeness or suitability for any particular purpose and disclaims all responsibility and all liability (including without limitation, liability in negligence) for all expenses, losses, damages (including indirect or consequential damage) and costs that may occur as a result of the product being inaccurate or incomplete in any way or for any reason.

All data depicted on this map has been sourced from either the Somerset Regional Council or the State of Queensland from the latest datasets at the time of map compilation.








Crown & Council Copyright Reserved.

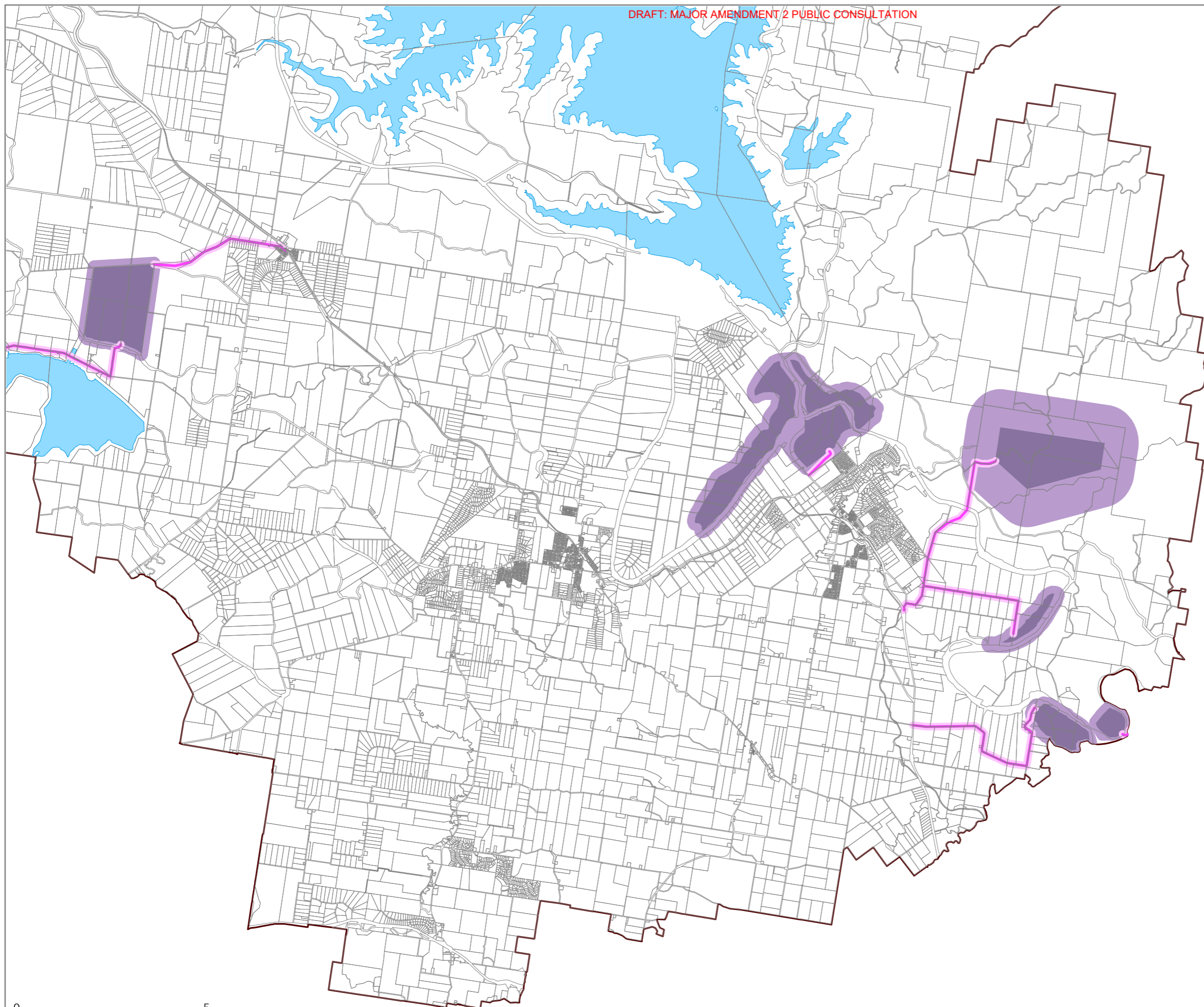
Sheet Index



EXTRACTIVE RESOURCES OVERLAY MAP

Legend

-  KRA Resource Processing
-  KRA Separation Area
-  KRA Transport Route
-  KRA Transport Separation Area
-  Cadastre (May 2025)
-  Waterbody
-  Somerset Regional Council Boundary



Effective: XX XXXXXXXX XXXX

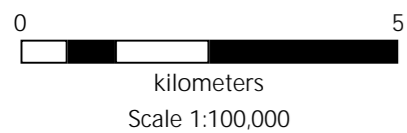
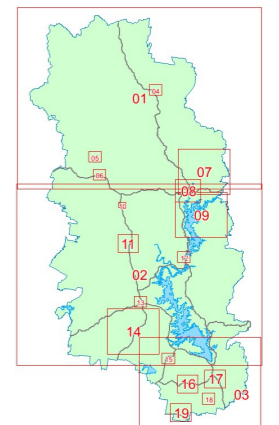
Disclaimer

Whilst every care is taken to ensure the accuracy of this product, neither the Somerset Regional Council or the State of Queensland make any representations or warranties about its accuracy, reliability, completeness or suitability for any particular purpose and disclaims all responsibility and all liability (including without limitation, liability in negligence) for all expenses, losses, damages (including indirect or consequential damage) and costs that may occur as a result of the product being inaccurate or incomplete in any way or for any reason.

All data depicted on this map has been sourced from either the Somerset Regional Council or the State of Queensland from the latest datasets at the time of map compilation.






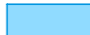

Crown & Council Copyright Reserved.

Sheet Index



EXTRACTIVE RESOURCES OVERLAY MAP

Legend

-  KRA Resource Processing
-  KRA Separation Area
-  KRA Transport Route
-  KRA Transport Separation Area
-  Cadastre (May 2025)
-  Waterbody
-  Somerset Regional Council Boundary



Effective: XX XXXXXXXXXX XXXX

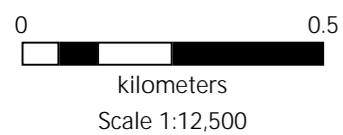
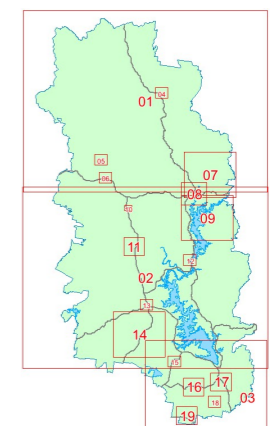
Disclaimer

Whilst every care is taken to ensure the accuracy of this product, neither the Somerset Regional Council or the State of Queensland make any representations or warranties about its accuracy, reliability, completeness or suitability for any particular purpose and disclaims all responsibility and all liability (including without limitation, liability in negligence) for all expenses, losses, damages (including indirect or consequential damage) and costs that may occur as a result of the product being inaccurate or incomplete in any way or for any reason.

All data depicted on this map has been sourced from either the Somerset Regional Council or the State of Queensland from the latest datasets at the time of map compilation.








Crown & Council Copyright Reserved.

Sheet Index



EXTRACTIVE RESOURCES OVERLAY MAP

Legend

-  KRA Resource Processing
-  KRA Separation Area
-  KRA Transport Route
-  KRA Transport Separation Area
-  Cadastre (May 2025)
-  Waterbody
-  Somerset Regional Council Boundary

Effective: XX XXXXXXXXX XXXX

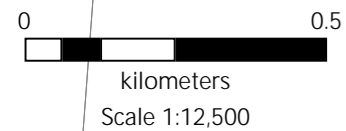
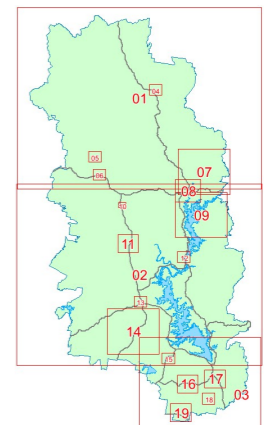
Disclaimer

Whilst every care is taken to ensure the accuracy of this product, neither the Somerset Regional Council or the State of Queensland make any representations or warranties about its accuracy, reliability, completeness or suitability for any particular purpose and disclaims all responsibility and all liability (including without limitation, liability in negligence) for all expenses, losses, damages (including indirect or consequential damage) and costs that may occur as a result of the product being inaccurate or incomplete in any way or for any reason.

All data depicted on this map has been sourced from either the Somerset Regional Council or the State of Queensland from the latest datasets at the time of map compilation.








Crown & Council Copyright Reserved.

Sheet Index



EXTRACTIVE RESOURCES OVERLAY MAP

Legend

-  KRA Resource Processing
-  KRA Separation Area
-  KRA Transport Route
-  KRA Transport Separation Area
-  Cadastre (May 2025)
-  Waterbody
-  Somerset Regional Council Boundary

Effective: XX XXXXXXXXXX XXXX

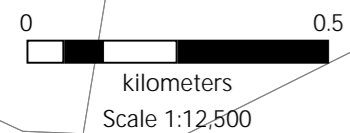
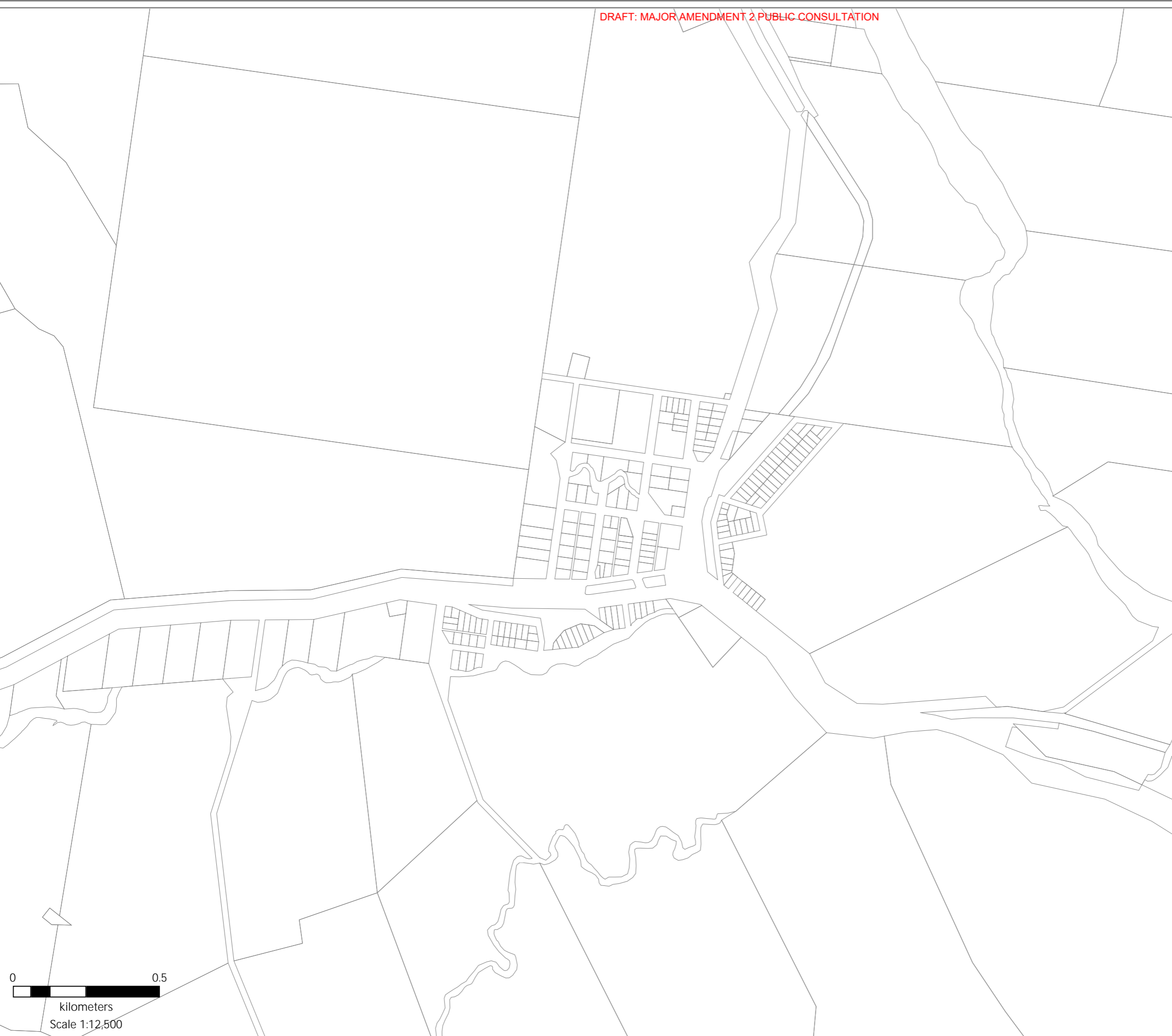
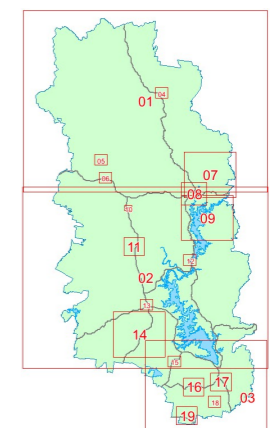
Disclaimer

Whilst every care is taken to ensure the accuracy of this product, neither the Somerset Regional Council or the State of Queensland make any representations or warranties about its accuracy, reliability, completeness or suitability for any particular purpose and disclaims all responsibility and all liability (including without limitation, liability in negligence) for all expenses, losses, damages (including indirect or consequential damage) and costs that may occur as a result of the product being inaccurate or incomplete in any way or for any reason.

All data depicted on this map has been sourced from either the Somerset Regional Council or the State of Queensland from the latest datasets at the time of map compilation.








Crown & Council Copyright Reserved.

Sheet Index



EXTRACTIVE RESOURCES OVERLAY MAP

Legend

-  KRA Resource Processing
-  KRA Separation Area
-  KRA Transport Route
-  KRA Transport Separation Area
-  Cadastre (May 2025)
-  Waterbody
-  Somerset Regional Council Boundary

Effective: XX XXXXXXXX XXXX

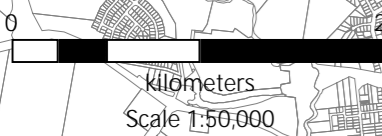
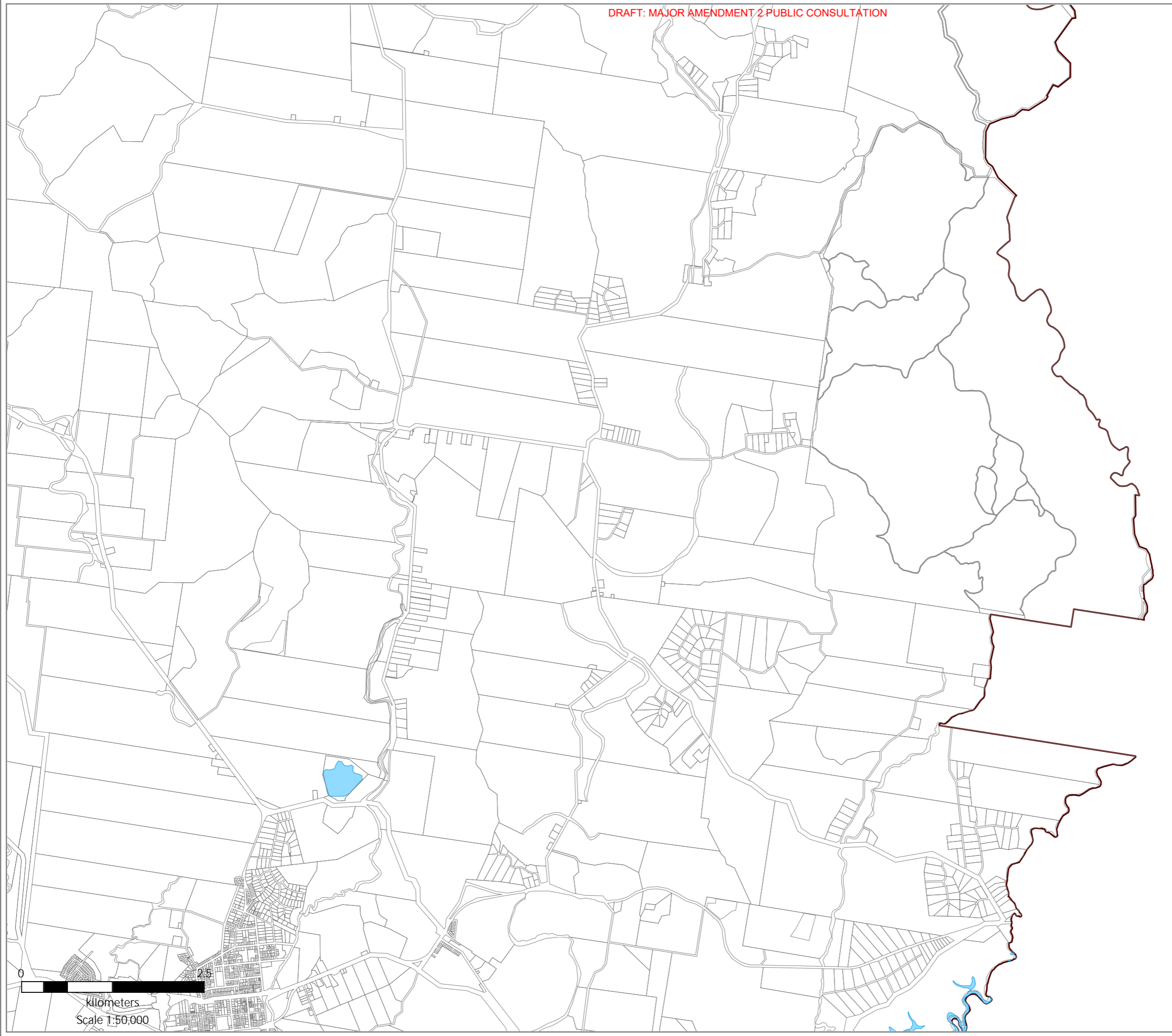
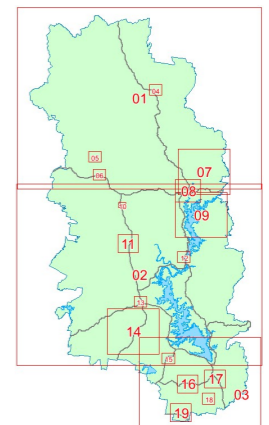
Disclaimer

Whilst every care is taken to ensure the accuracy of this product, neither the Somerset Regional Council or the State of Queensland make any representations or warranties about its accuracy, reliability, completeness or suitability for any particular purpose and disclaims all responsibility and all liability (including without limitation, liability in negligence) for all expenses, losses, damages (including indirect or consequential damage) and costs that may occur as a result of the product being inaccurate or incomplete in any way or for any reason.

All data depicted on this map has been sourced from either the Somerset Regional Council or the State of Queensland from the latest datasets at the time of map compilation.








Crown & Council Copyright Reserved.

Sheet Index



EXTRACTIVE RESOURCES OVERLAY MAP

Legend

-  KRA Resource Processing
-  KRA Separation Area
-  KRA Transport Route
-  KRA Transport Separation Area
-  Cadastre (May 2025)
-  Waterbody
-  Somerset Regional Council Boundary

Effective: XX XXXXXXXX XXXX

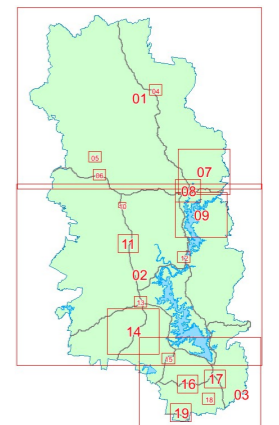
Disclaimer

Whilst every care is taken to ensure the accuracy of this product, neither the Somerset Regional Council or the State of Queensland make any representations or warranties about its accuracy, reliability, completeness or suitability for any particular purpose and disclaims all responsibility and all liability (including without limitation, liability in negligence) for all expenses, losses, damages (including indirect or consequential damage) and costs that may occur as a result of the product being inaccurate or incomplete in any way or for any reason.

All data depicted on this map has been sourced from either the Somerset Regional Council or the State of Queensland from the latest datasets at the time of map compilation.








Crown & Council Copyright Reserved.

Sheet Index



EXTRACTIVE RESOURCES OVERLAY MAP

Legend

-  KRA Resource Processing
-  KRA Separation Area
-  KRA Transport Route
-  KRA Transport Separation Area
-  Cadastre (May 2025)
-  Waterbody
-  Somerset Regional Council Boundary

Effective: XX XXXXXXXX XXXX

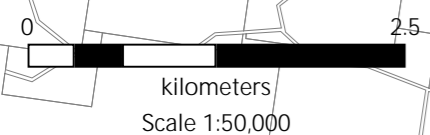
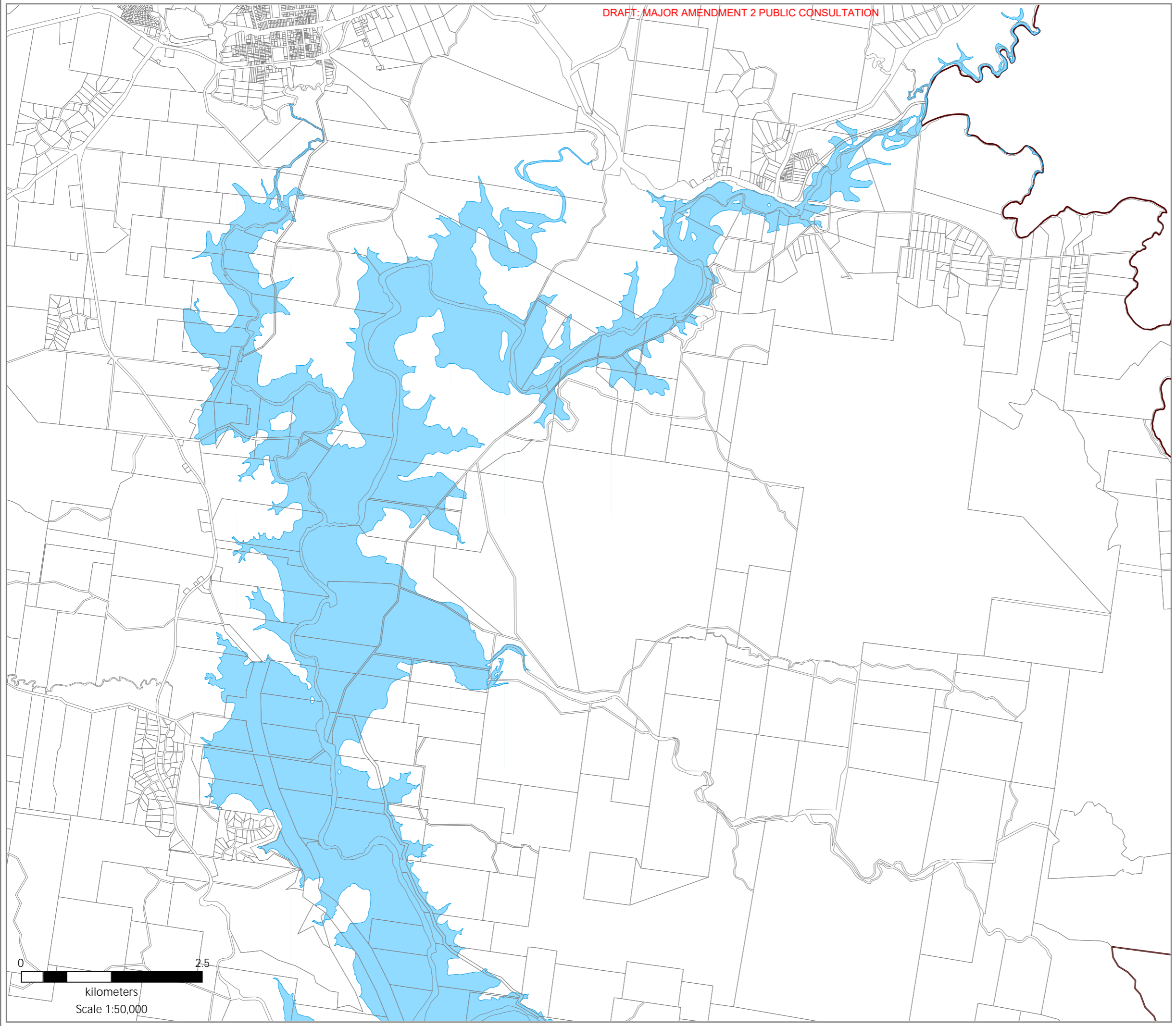
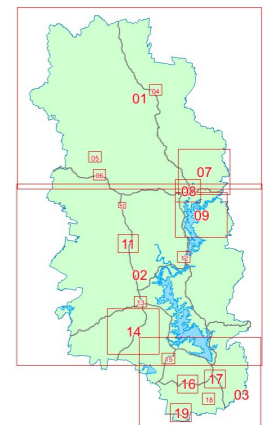
Disclaimer

Whilst every care is taken to ensure the accuracy of this product, neither the Somerset Regional Council or the State of Queensland make any representations or warranties about its accuracy, reliability, completeness or suitability for any particular purpose and disclaims all responsibility and all liability (including without limitation, liability in negligence) for all expenses, losses, damages (including indirect or consequential damage) and costs that may occur as a result of the product being inaccurate or incomplete in any way or for any reason.

All data depicted on this map has been sourced from either the Somerset Regional Council or the State of Queensland from the latest datasets at the time of map compilation.






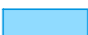

Crown & Council Copyright Reserved.

Sheet Index



EXTRACTIVE RESOURCES OVERLAY MAP

Legend

-  KRA Resource Processing
-  KRA Separation Area
-  KRA Transport Route
-  KRA Transport Separation Area
-  Cadastre (May 2025)
-  Waterbody
-  Somerset Regional Council Boundary

Effective: XX XXXXXXXXXX XXXX

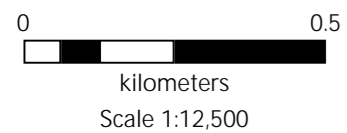
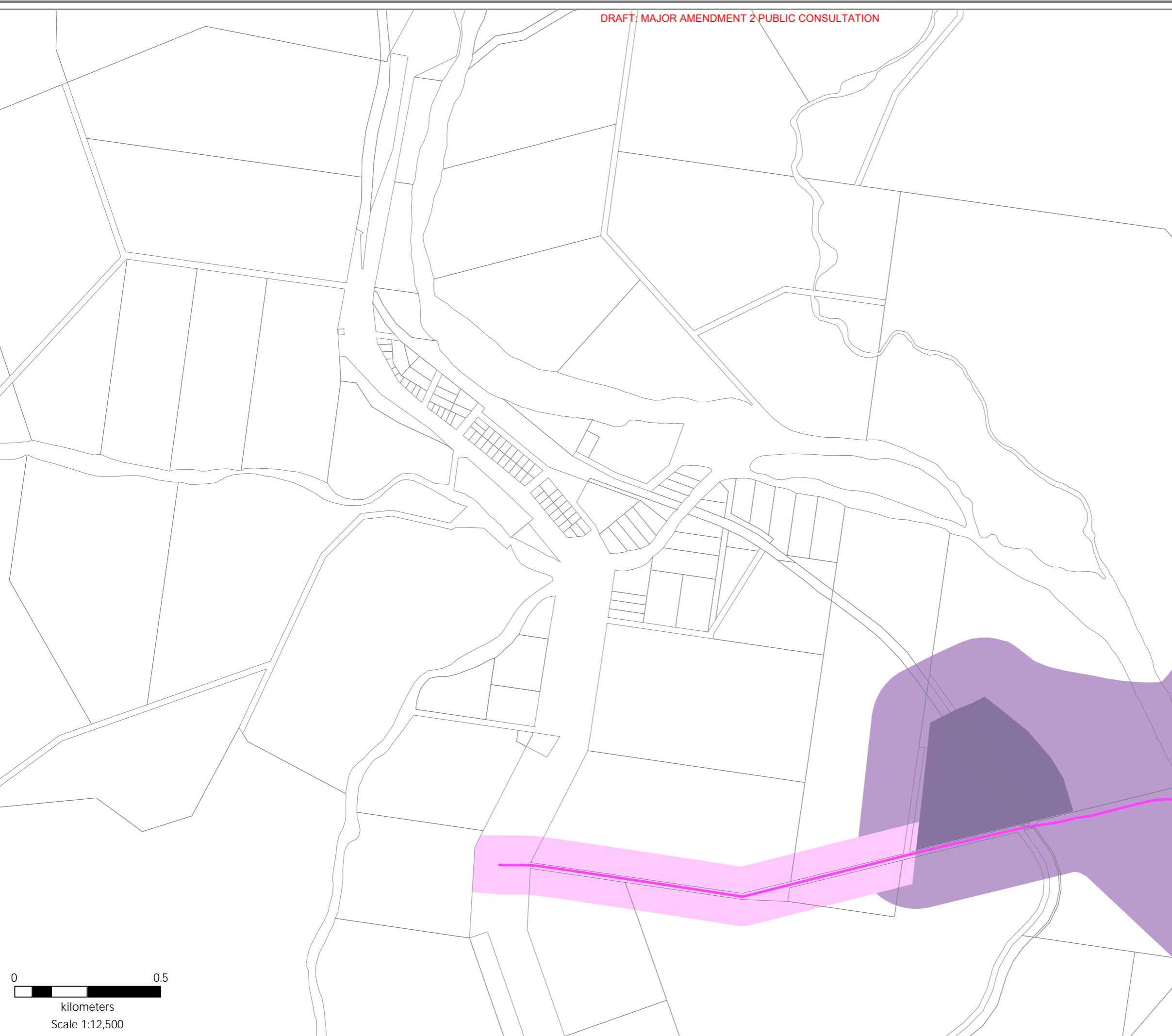
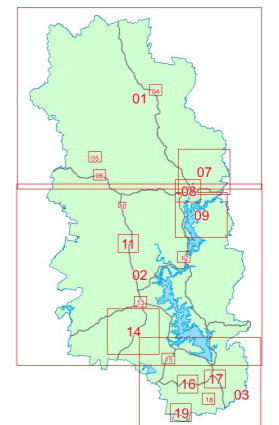
Disclaimer

Whilst every care is taken to ensure the accuracy of this product, neither the Somerset Regional Council or the State of Queensland make any representations or warranties about its accuracy, reliability, completeness or suitability for any particular purpose and disclaims all responsibility and all liability (including without limitation, liability in negligence) for all expenses, losses, damages (including indirect or consequential damage) and costs that may occur as a result of the product being inaccurate or incomplete in any way or for any reason.

All data depicted on this map has been sourced from either the Somerset Regional Council or the State of Queensland from the latest datasets at the time of map compilation.








Crown & Council Copyright Reserved.

Sheet Index



EXTRACTIVE RESOURCES OVERLAY MAP

Legend

-  KRA Resource Processing
-  KRA Separation Area
-  KRA Transport Route
-  KRA Transport Separation Area
-  Cadastre (May 2025)
-  Waterbody
-  Somerset Regional Council Boundary

Effective: XX XXXXXXXX XXXX

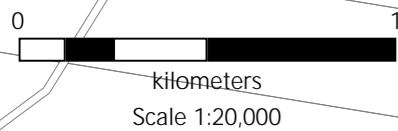
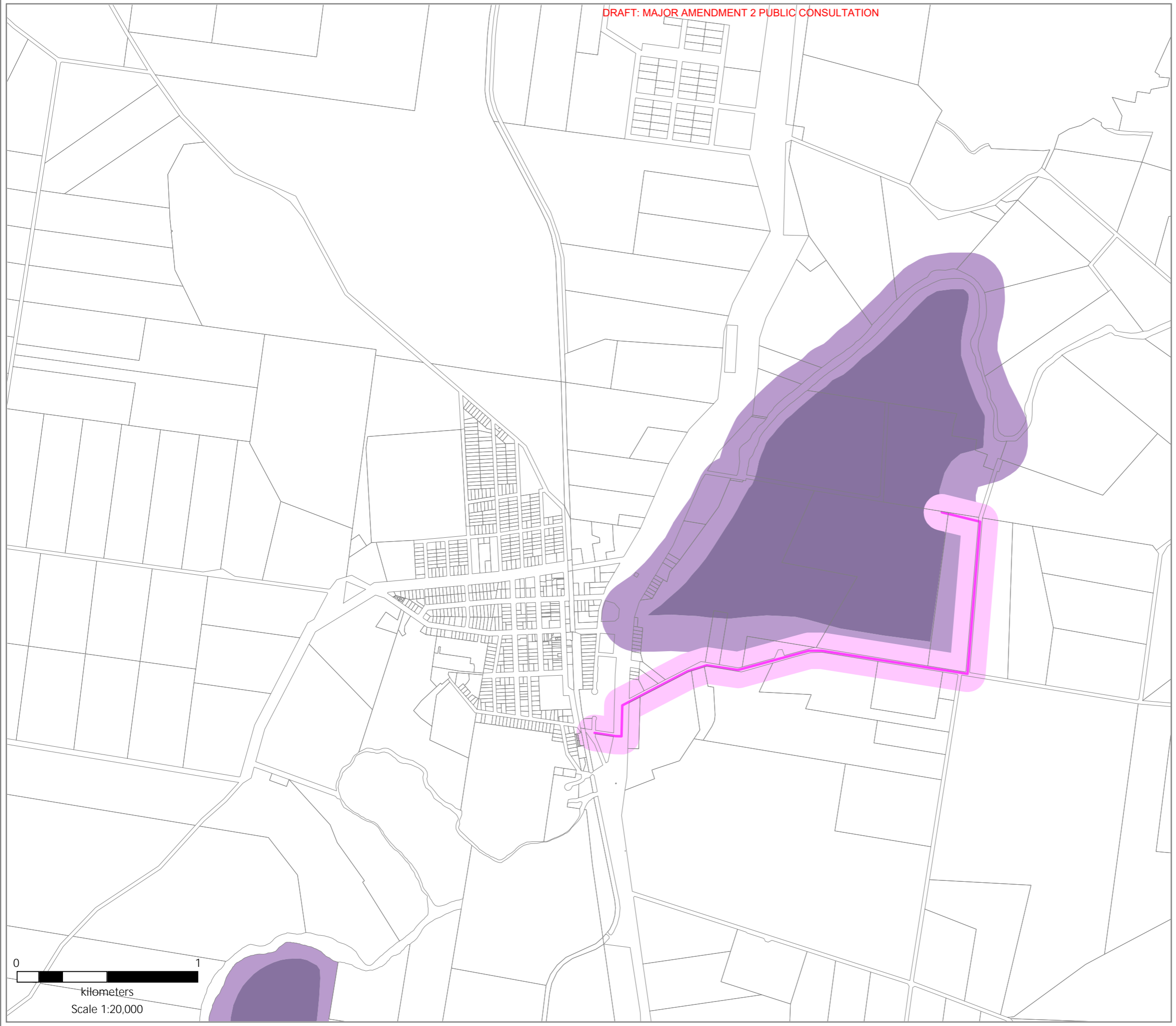
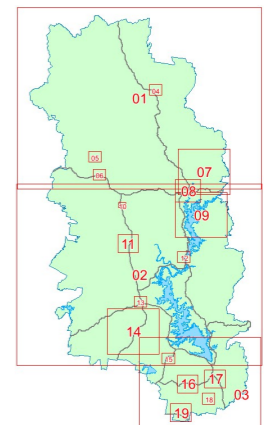
Disclaimer

Whilst every care is taken to ensure the accuracy of this product, neither the Somerset Regional Council or the State of Queensland make any representations or warranties about its accuracy, reliability, completeness or suitability for any particular purpose and disclaims all responsibility and all liability (including without limitation, liability in negligence) for all expenses, losses, damages (including indirect or consequential damage) and costs that may occur as a result of the product being inaccurate or incomplete in any way or for any reason.

All data depicted on this map has been sourced from either the Somerset Regional Council or the State of Queensland from the latest datasets at the time of map compilation.








Crown & Council Copyright Reserved.

Sheet Index



EXTRACTIVE RESOURCES OVERLAY MAP

Legend

-  KRA Resource Processing
-  KRA Separation Area
-  KRA Transport Route
-  KRA Transport Separation Area
-  Cadastre (May 2025)
-  Waterbody
-  Somerset Regional Council Boundary

Effective: XX XXXXXXXX XXXX

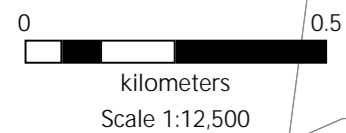
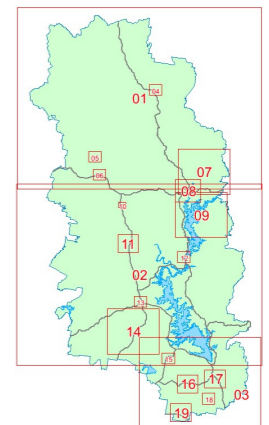
Disclaimer

Whilst every care is taken to ensure the accuracy of this product, neither the Somerset Regional Council or the State of Queensland make any representations or warranties about its accuracy, reliability, completeness or suitability for any particular purpose and disclaims all responsibility and all liability (including without limitation, liability in negligence) for all expenses, losses, damages (including indirect or consequential damage) and costs that may occur as a result of the product being inaccurate or incomplete in any way or for any reason.

All data depicted on this map has been sourced from either the Somerset Regional Council or the State of Queensland from the latest datasets at the time of map compilation.








Crown & Council Copyright Reserved.

Sheet Index



EXTRACTIVE RESOURCES OVERLAY MAP

Legend

-  KRA Resource Processing
-  KRA Separation Area
-  KRA Transport Route
-  KRA Transport Separation Area
-  Cadastre (May 2025)
-  Waterbody
-  Somerset Regional Council Boundary

Effective: XX XXXXXXXXXX XXXX

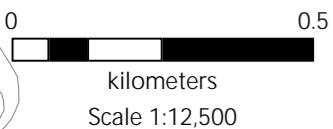
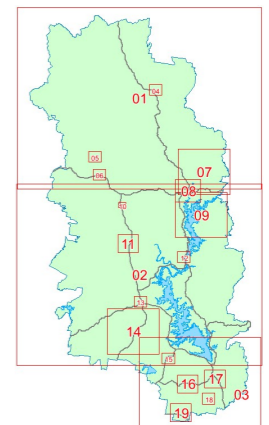
Disclaimer

Whilst every care is taken to ensure the accuracy of this product, neither the Somerset Regional Council or the State of Queensland make any representations or warranties about its accuracy, reliability, completeness or suitability for any particular purpose and disclaims all responsibility and all liability (including without limitation, liability in negligence) for all expenses, losses, damages (including indirect or consequential damage) and costs that may occur as a result of the product being inaccurate or incomplete in any way or for any reason.

All data depicted on this map has been sourced from either the Somerset Regional Council or the State of Queensland from the latest datasets at the time of map compilation.








Crown & Council Copyright Reserved.

Sheet Index



EXTRACTIVE RESOURCES OVERLAY MAP

Legend

-  KRA Resource Processing
-  KRA Separation Area
-  KRA Transport Route
-  KRA Transport Separation Area
-  Cadastre (May 2025)
-  Waterbody
-  Somerset Regional Council Boundary

Effective: XX XXXXXXXXXX XXXX

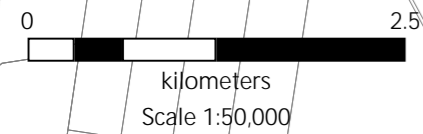
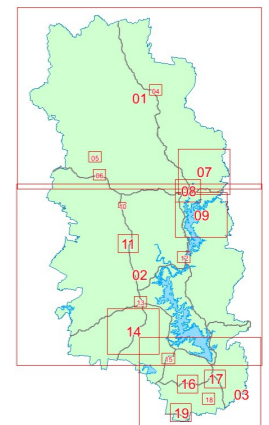
Disclaimer

Whilst every care is taken to ensure the accuracy of this product, neither the Somerset Regional Council or the State of Queensland make any representations or warranties about its accuracy, reliability, completeness or suitability for any particular purpose and disclaims all responsibility and all liability (including without limitation, liability in negligence) for all expenses, losses, damages (including indirect or consequential damage) and costs that may occur as a result of the product being inaccurate or incomplete in any way or for any reason.

All data depicted on this map has been sourced from either the Somerset Regional Council or the State of Queensland from the latest datasets at the time of map compilation.








Crown & Council Copyright Reserved.

Sheet Index



EXTRACTIVE RESOURCES OVERLAY MAP

Legend

-  KRA Resource Processing
-  KRA Separation Area
-  KRA Transport Route
-  KRA Transport Separation Area
-  Cadastre (May 2025)
-  Waterbody
-  Somerset Regional Council Boundary

Effective: XX XXXXXXXXXX XXXX

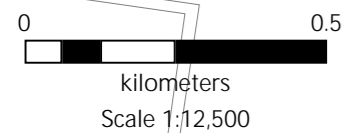
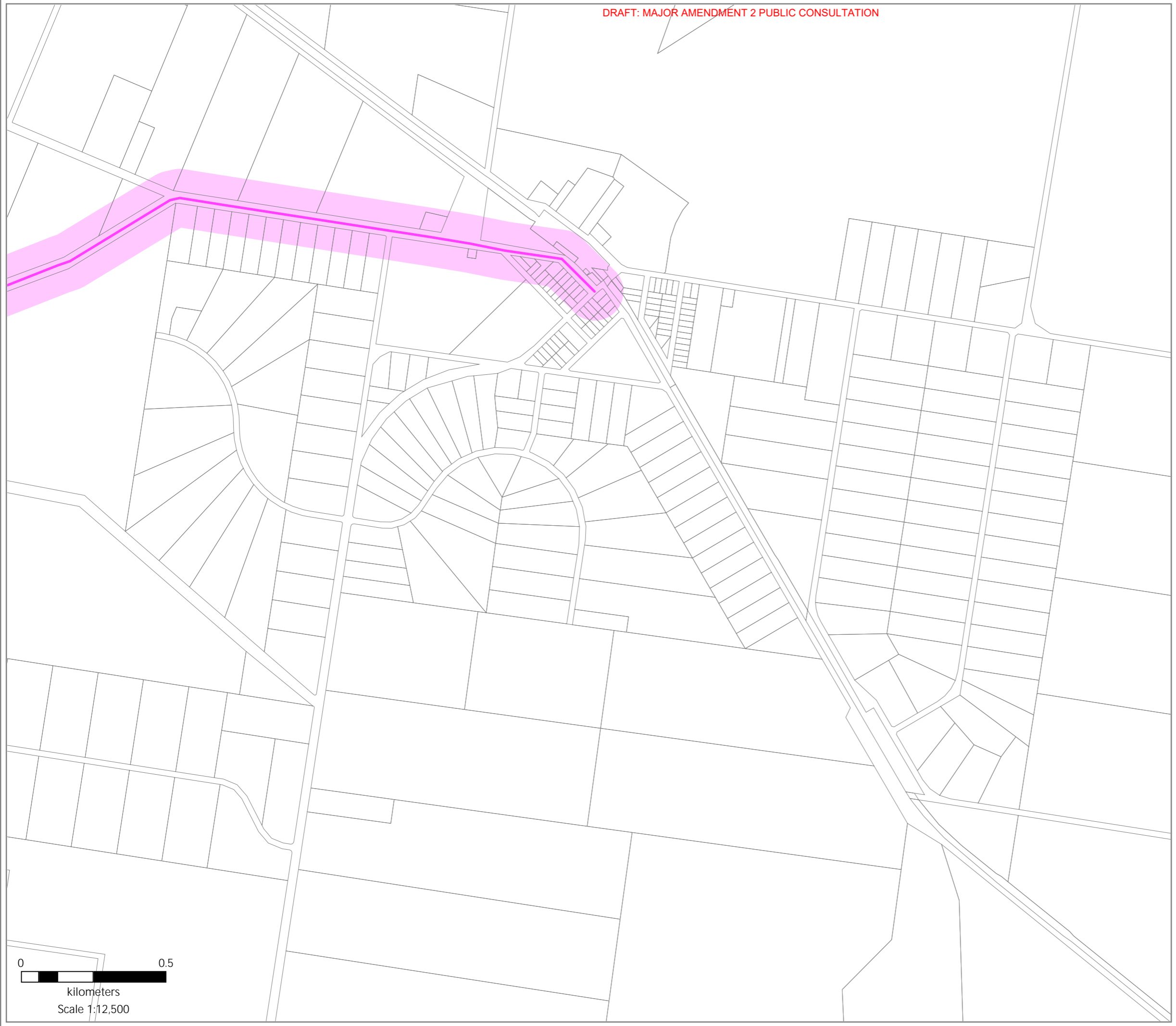
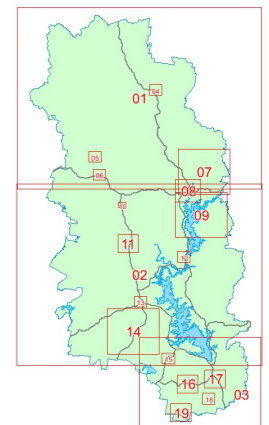
Disclaimer

Whilst every care is taken to ensure the accuracy of this product, neither the Somerset Regional Council or the State of Queensland make any representations or warranties about its accuracy, reliability, completeness or suitability for any particular purpose and disclaims all responsibility and all liability (including without limitation, liability in negligence) for all expenses, losses, damages (including indirect or consequential damage) and costs that may occur as a result of the product being inaccurate or incomplete in any way or for any reason.

All data depicted on this map has been sourced from either the Somerset Regional Council or the State of Queensland from the latest datasets at the time of map compilation.








Crown & Council Copyright Reserved.

Sheet Index



EXTRACTIVE RESOURCES OVERLAY MAP

Legend

-  KRA Resource Processing
-  KRA Separation Area
-  KRA Transport Route
-  KRA Transport Separation Area
-  Cadastre (May 2025)
-  Waterbody
-  Somerset Regional Council Boundary

Effective: XX XXXXXXXXXX XXXX

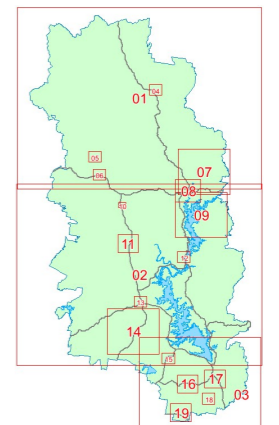
Disclaimer

Whilst every care is taken to ensure the accuracy of this product, neither the Somerset Regional Council or the State of Queensland make any representations or warranties about its accuracy, reliability, completeness or suitability for any particular purpose and disclaims all responsibility and all liability (including without limitation, liability in negligence) for all expenses, losses, damages (including indirect or consequential damage) and costs that may occur as a result of the product being inaccurate or incomplete in any way or for any reason.

All data depicted on this map has been sourced from either the Somerset Regional Council or the State of Queensland from the latest datasets at the time of map compilation.








Crown & Council Copyright Reserved.

Sheet Index



EXTRACTIVE RESOURCES OVERLAY MAP

Legend

-  KRA Resource Processing
-  KRA Separation Area
-  KRA Transport Route
-  KRA Transport Separation Area
-  Cadastre (May 2025)
-  Waterbody
-  Somerset Regional Council Boundary

Effective: XX XXXXXXXXXX XXXX

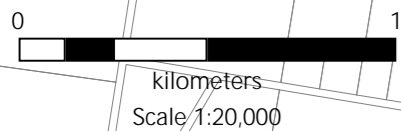
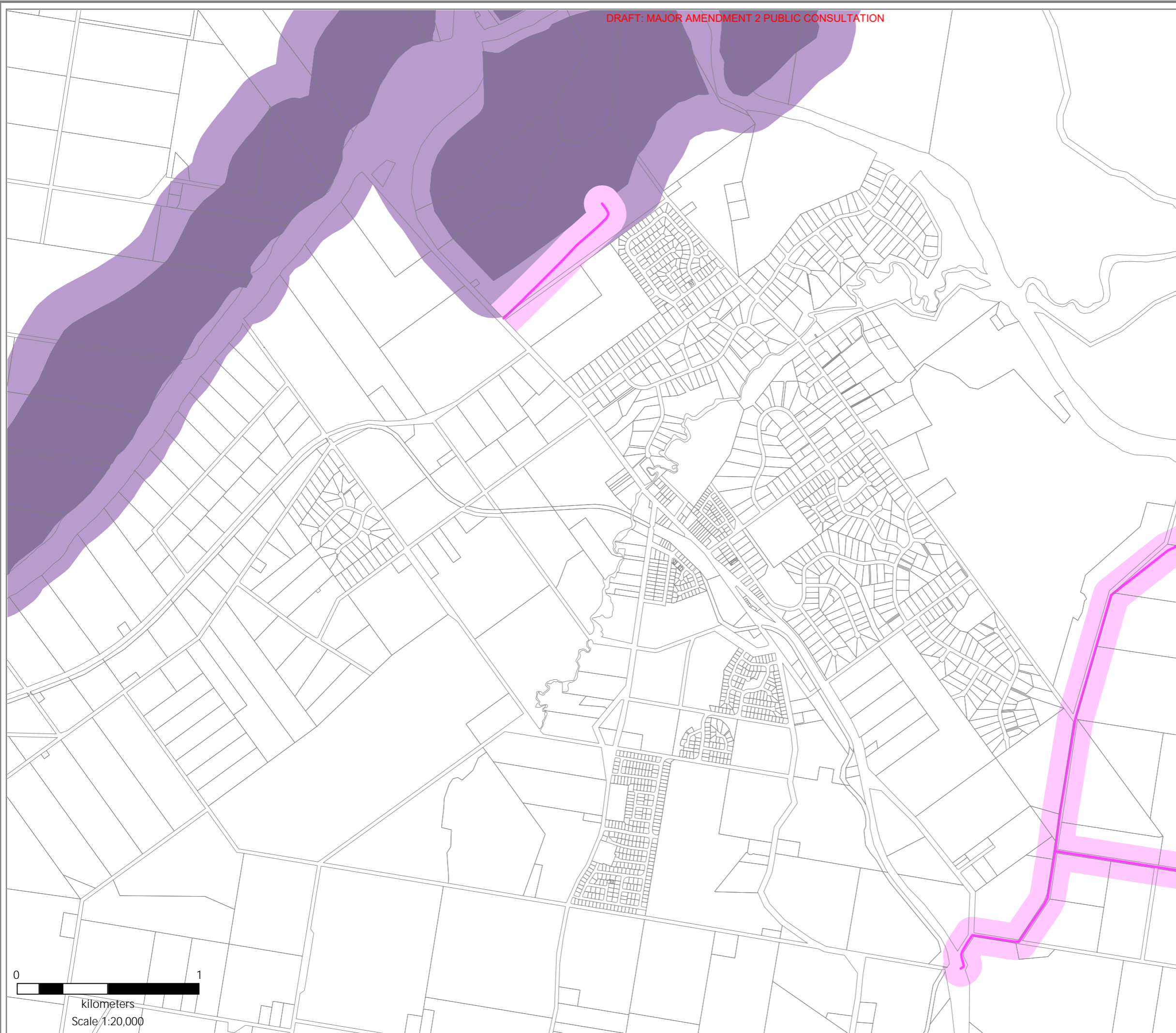
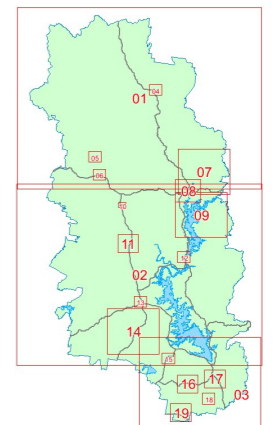
Disclaimer

Whilst every care is taken to ensure the accuracy of this product, neither the Somerset Regional Council or the State of Queensland make any representations or warranties about its accuracy, reliability, completeness or suitability for any particular purpose and disclaims all responsibility and all liability (including without limitation, liability in negligence) for all expenses, losses, damages (including indirect or consequential damage) and costs that may occur as a result of the product being inaccurate or incomplete in any way or for any reason.

All data depicted on this map has been sourced from either the Somerset Regional Council or the State of Queensland from the latest datasets at the time of map compilation.






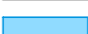

Crown & Council Copyright Reserved.

Sheet Index



EXTRACTIVE RESOURCES OVERLAY MAP

Legend

-  KRA Resource Processing
-  KRA Separation Area
-  KRA Transport Route
-  KRA Transport Separation Area
-  Cadastre (May 2025)
-  Waterbody
-  Somerset Regional Council Boundary

Effective: XX XXXXXXXXXX XXXX

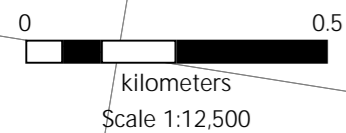
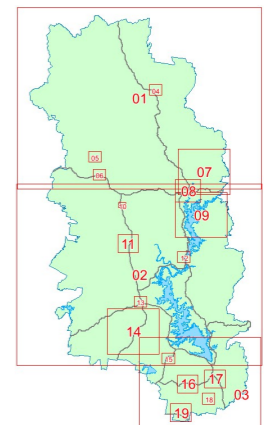
Disclaimer

Whilst every care is taken to ensure the accuracy of this product, neither the Somerset Regional Council or the State of Queensland make any representations or warranties about its accuracy, reliability, completeness or suitability for any particular purpose and disclaims all responsibility and all liability (including without limitation, liability in negligence) for all expenses, losses, damages (including indirect or consequential damage) and costs that may occur as a result of the product being inaccurate or incomplete in any way or for any reason.

All data depicted on this map has been sourced from either the Somerset Regional Council or the State of Queensland from the latest datasets at the time of map compilation.








Crown & Council Copyright Reserved.

Sheet Index



EXTRACTIVE RESOURCES OVERLAY MAP

Legend

-  KRA Resource Processing
-  KRA Separation Area
-  KRA Transport Route
-  KRA Transport Separation Area
-  Cadastre (May 2025)
-  Waterbody
-  Somerset Regional Council Boundary

Effective: XX XXXXXXXXXX XXXX

Disclaimer

Whilst every care is taken to ensure the accuracy of this product, neither the Somerset Regional Council or the State of Queensland make any representations or warranties about its accuracy, reliability, completeness or suitability for any particular purpose and disclaims all responsibility and all liability (including without limitation, liability in negligence) for all expenses, losses, damages (including indirect or consequential damage) and costs that may occur as a result of the product being inaccurate or incomplete in any way or for any reason.

All data depicted on this map has been sourced from either the Somerset Regional Council or the State of Queensland from the latest datasets at the time of map compilation.

Crown & Council Copyright Reserved.

Sheet Index

