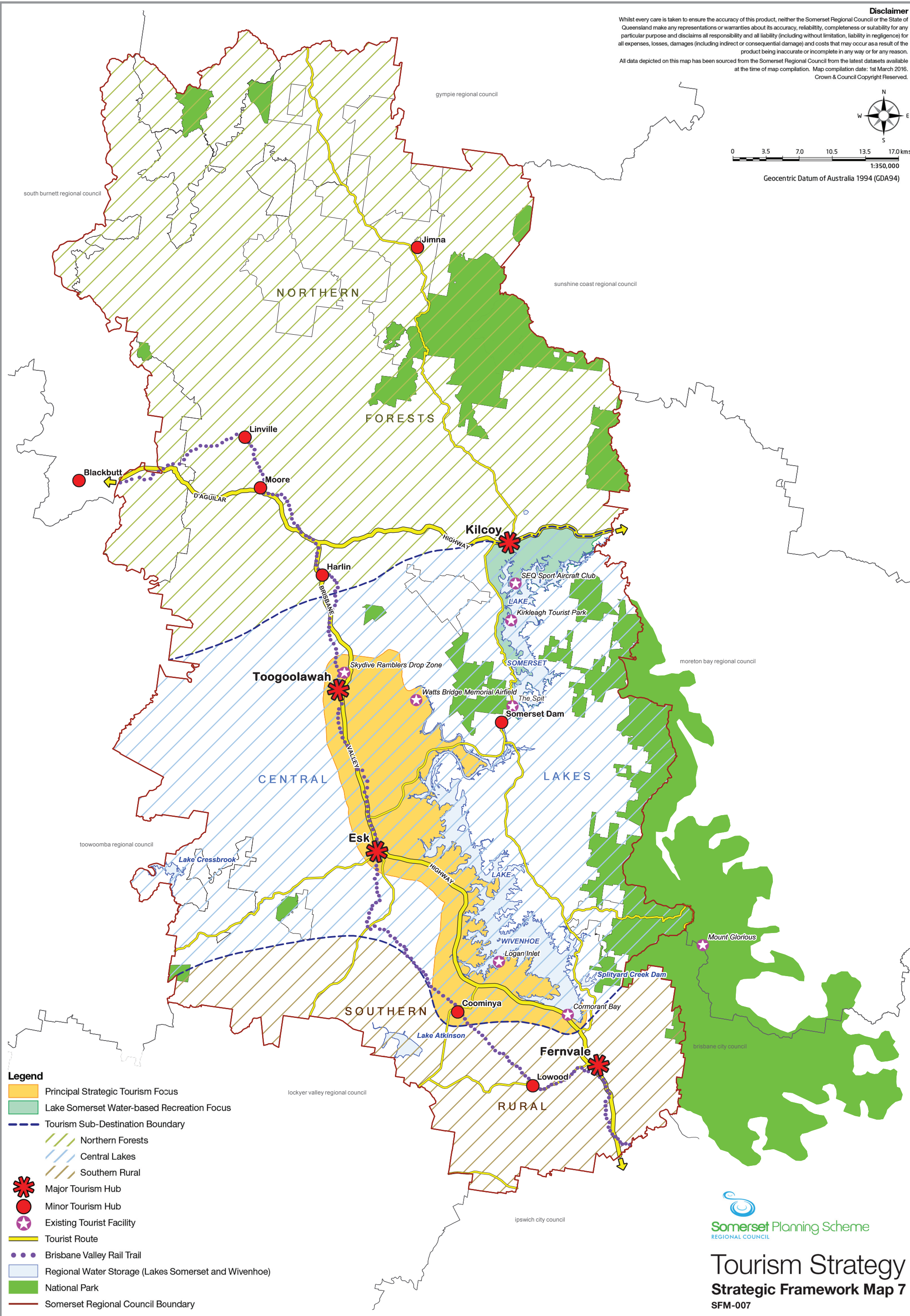
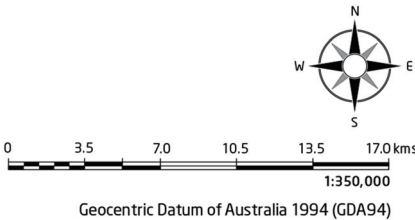


Disclaimer
Whilst every care is taken to ensure the accuracy of this product, neither the Somerset Regional Council or the State of Queensland make any representations or warranties about its accuracy, reliability, completeness or suitability for any particular purpose and disclaims all responsibility and all liability (including without limitation, liability in negligence) for all expenses, losses, damages (including indirect or consequential damage) and costs that may occur as a result of the product being inaccurate or incomplete in any way or for any reason.
All data depicted on this map has been sourced from the Somerset Regional Council from the latest datasets available at the time of map compilation. Map compilation date: 1st March 2016.
Crown & Council Copyright Reserved.



- Legend**
- Principal Strategic Tourism Focus
 - Lake Somerset Water-based Recreation Focus
 - Tourism Sub-Destination Boundary
 - Northern Forests
 - Central Lakes
 - Southern Rural
 - Major Tourism Hub
 - Minor Tourism Hub
 - Existing Tourist Facility
 - Tourist Route
 - Brisbane Valley Rail Trail
 - Regional Water Storage (Lakes Somerset and Wivenhoe)
 - National Park
 - Somerset Regional Council Boundary


Somerset Planning Scheme
REGIONAL COUNCIL

Tourism Strategy
Strategic Framework Map 7
SFM-007