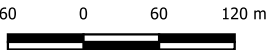


**Legend**

- Property Boundaries
- Roberts Bros Properties
- 1m LiDAR Contours

**Depth (m)**

- <= 0.2
- 0.2 - 0.5
- 0.5 - 0.75
- 0.75 - 1
- 1 - 1.25
- 1.25 - 1.5
- 1.5 - 1.75
- 1.75 - 2
- 2.0 - 5.0
- > 5.0



© Hydrology and Water Management Consulting Pty Ltd (HWMC) 2023.  
HWMC endeavours to ensure that the information contained in this figure is correct at the time of publication. Furthermore, HWMC makes no representations, warranties or guarantees about its accuracy, reliability, completeness or suitability for any particular purpose.

**Overlander Avenue Woolmar (Kilcoy)**

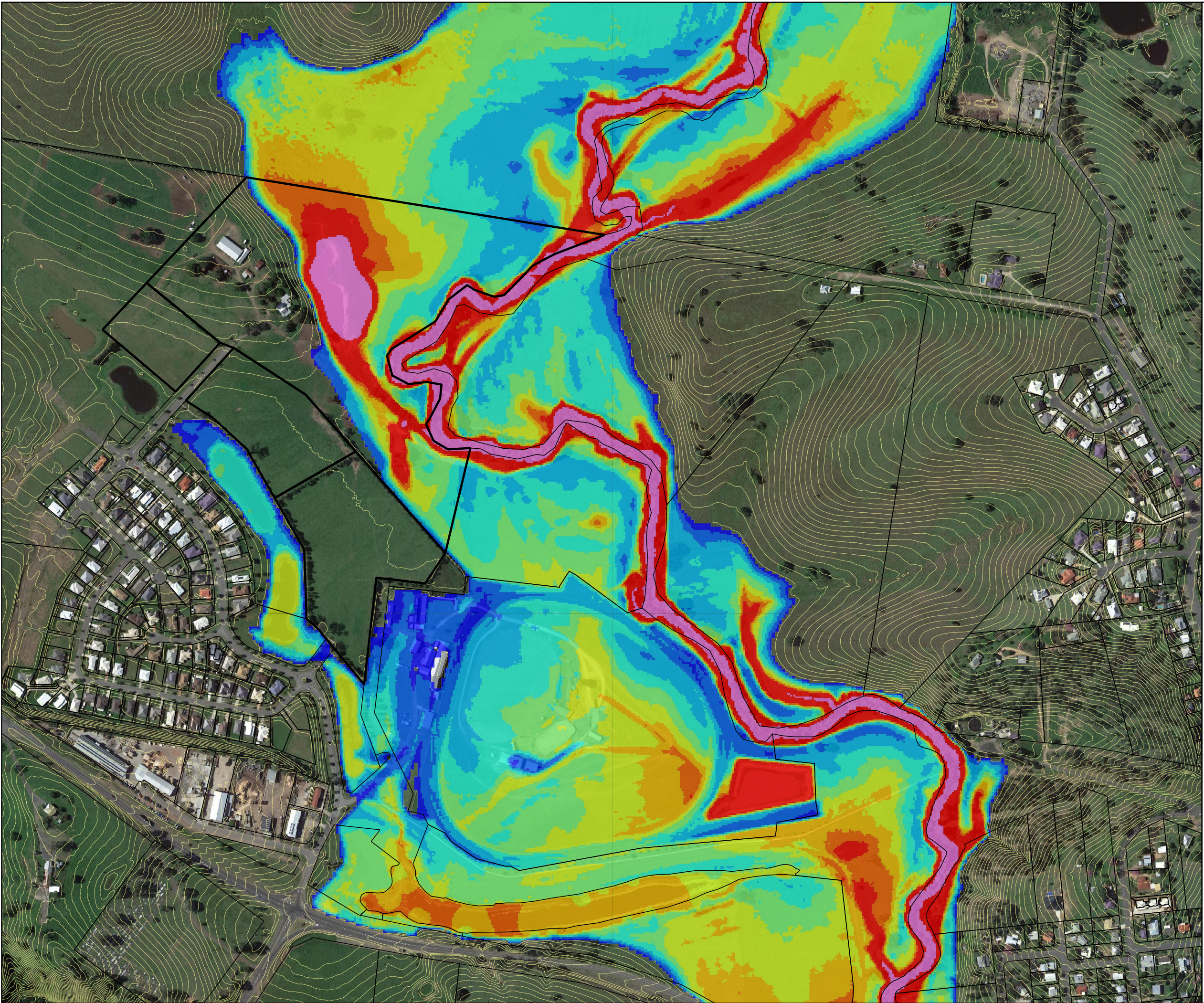
Peak Flood Depths

Proposed Case  
(TUFLOW Case P03a)

5% AEP Event

Client: Roberts Bros Pty Ltd

Ref: Depth\_P03a\_0020Y

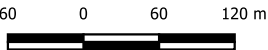


**Legend**

- Property Boundaries
- Roberts Bros Properties
- 1m LiDAR Contours

**Depth (m)**

- <= 0.2
- 0.2 - 0.5
- 0.5 - 0.75
- 0.75 - 1
- 1 - 1.25
- 1.25 - 1.5
- 1.5 - 1.75
- 1.75 - 2
- 2.0 - 5.0
- > 5.0



© Hydrology and Water Management Consulting Pty Ltd (HWMC) 2023.  
HWMC endeavours to ensure that the information contained in this figure is correct at the time of publication. Furthermore, HWMC makes no representations, warranties or guarantees about its accuracy, reliability, completeness or suitability for any particular purpose.

**Overlander Avenue Woolmar (Kilcoy)**

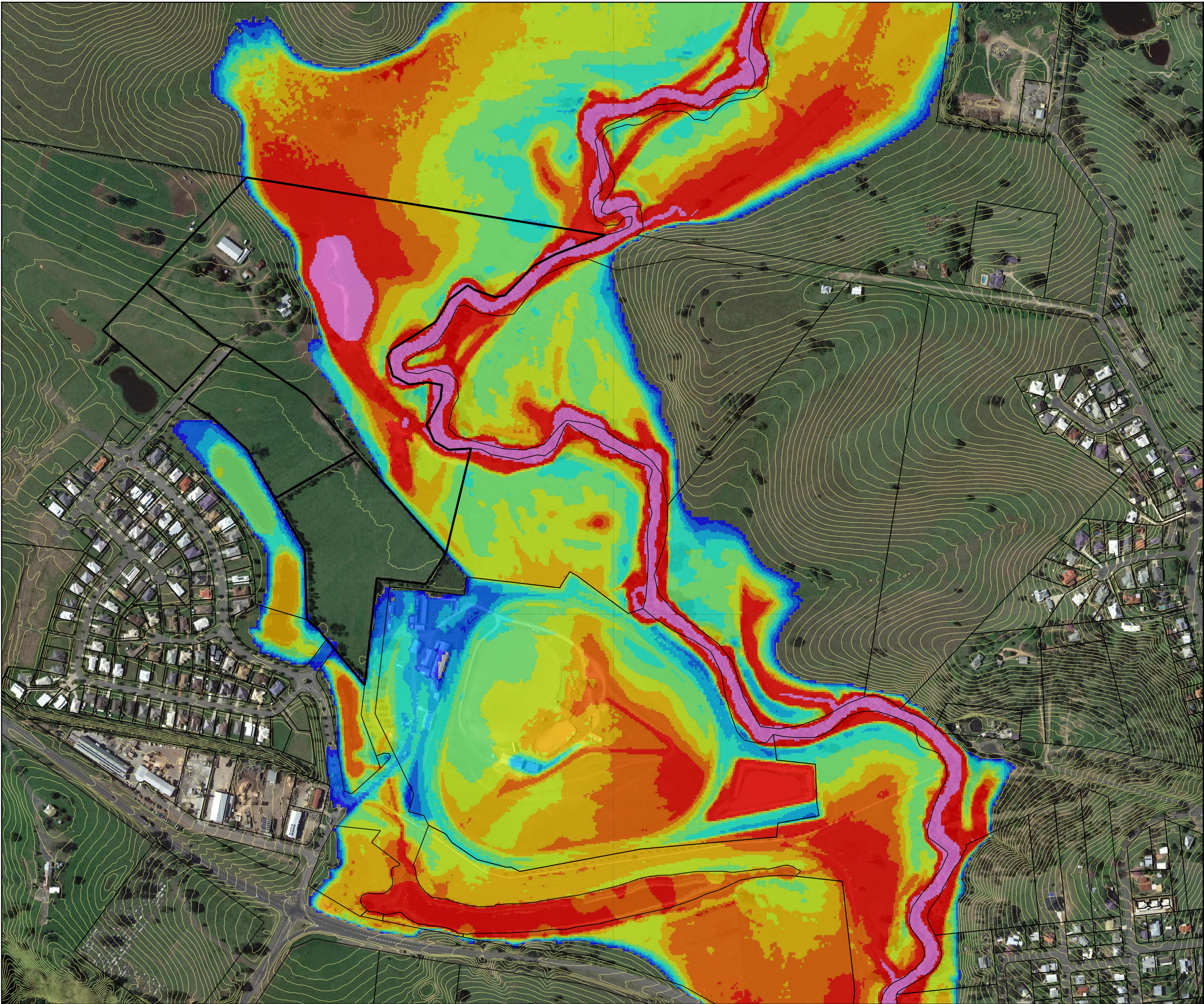
**Peak Flood Depths**

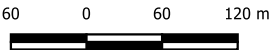
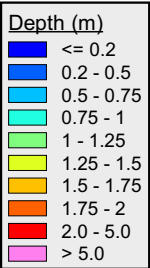
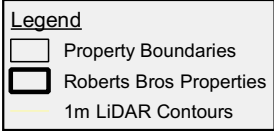
Proposed Case  
(TUFLOW Case P03a)

1% AEP Event

Client: Roberts Bros Pty Ltd

Ref: Depth\_P03a\_0100Y





© Hydrology and Water Management Consulting Pty Ltd (HWMC) 2023.  
HWMC endeavours to ensure that the information contained in this figure is correct at the time of publication. Furthermore, HWMC makes no representations, warranties or guarantees about its accuracy, reliability, completeness or suitability for any particular purpose.

**Overlander Avenue Woolmar (Kilcoy)**

**Peak Flood Depths**

Proposed Case  
(TUFLOW Case P03a)

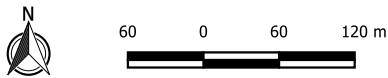
0.2% AEP Event (1in500)

Client: Roberts Bros Pty Ltd

Ref: Depth\_P03a\_0500Y

- Legend**
- Property Boundaries
  - Roberts Bros Properties
  - 1m LiDAR Contours

- Hazard Category  
(ARR2019)**
- H1
  - H2
  - H3
  - H4
  - H5
  - H6



© Hydrology and Water Management Consulting Pty Ltd (HWMC) 2023.  
HWMC endeavours to ensure that the information contained in this figure is correct at the time of publication. Furthermore, HWMC makes no representations, warranties or guarantees about its accuracy, reliability, completeness or suitability for any particular purpose.

Overlander Avenue Woolmar (Kilcoy)

Peak Flood Hazard  
Proposed Case  
(TUFLOW Case P03a)

5% AEP Event

Client: Roberts Bros Pty Ltd

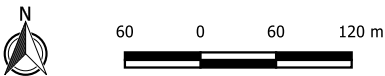
Ref: Haz\_P03a\_0020Y

**Legend**

- Property Boundaries
- Roberts Bros Properties
- 1m LiDAR Contours

**Hazard Category  
(ARR2019)**

- H1
- H2
- H3
- H4
- H5
- H6



© Hydrology and Water Management Consulting Pty Ltd (HWMC) 2023.  
HWMC endeavours to ensure that the information contained in this figure is correct at the time of publication. Furthermore, HWMC makes no representations, warranties or guarantees about its accuracy, reliability, completeness or suitability for any particular purpose.




**Overlander Avenue Woolmar (Kilcoy)**

Peak Flood Hazard  
Proposed Case  
(TUFLOW Case P03a)  
  
1% AEP Event

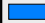





Client: Roberts Bros Pty Ltd  
Ref: Haz\_P03a\_0100Y

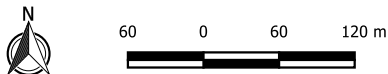


**Legend**

-  Property Boundaries
-  Roberts Bros Properties
-  1m LiDAR Contours

**Hazard Category  
(ARR2019)**

-  H1
-  H2
-  H3
-  H4
-  H5
-  H6



© Hydrology and Water Management Consulting Pty Ltd (HWMC) 2023.  
HWMC endeavours to ensure that the information contained in this figure is correct at the time of publication. Furthermore, HWMC makes no representations, warranties or guarantees about its accuracy, reliability, completeness or suitability for any particular purpose.

**Overlander Avenue Woolmar (Kilcoy)**

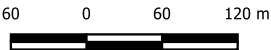
Peak Flood Hazard  
Proposed Case  
(TUFLOW Case P03a)  
  
0.2% AEP Event

Client: Roberts Bros Pty Ltd  
Ref: Haz\_P03a\_0500Y



- Legend**
- Property Boundaries
  - Roberts Bros Properties
  - 1m LiDAR Contours

Velocity (m/s)	
<= 0.25	
0.25 - 0.5	
0.5 - 0.75	
0.75 - 1	
1 - 1.25	
1.25 - 1.5	
1.5 - 1.75	
1.75 - 2	
2 - 2.25	
2.25 - 2.5	
2.5 - 2.75	
> 2.75	



© Hydrology and Water Management Consulting Pty Ltd (HWMC) 2023.  
HWMC endeavours to ensure that the information contained in this figure is correct at the time of publication. Furthermore, HWMC makes no representations, warranties or guarantees about its accuracy, reliability, completeness or suitability for any particular purpose.

Overlander Avenue Woolmar (Kilcoy)

Peak Flood Velocities

Proposed Case  
(TUFLOW Case P03a)

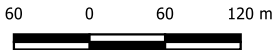
5% AEP Event

Client: Roberts Bros Pty Ltd

Ref: Vel\_P03a\_0020Y

- Legend**
- Property Boundaries
  - Roberts Bros Properties
  - 1m LiDAR Contours

Velocity (m/s)	
<= 0.25	
0.25 - 0.5	
0.5 - 0.75	
0.75 - 1	
1 - 1.25	
1.25 - 1.5	
1.5 - 1.75	
1.75 - 2	
2 - 2.25	
2.25 - 2.5	
2.5 - 2.75	
> 2.75	



© Hydrology and Water Management Consulting Pty Ltd (HWMC) 2023.  
HWMC endeavours to ensure that the information contained in this figure is correct at the time of publication. Furthermore, HWMC makes no representations, warranties or guarantees about its accuracy, reliability, completeness or suitability for any particular purpose.

**Overlander Avenue Woolmar (Kilcoy)**

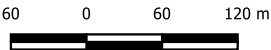
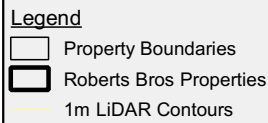
Peak Flood Velocities

Proposed Case  
(TUFLOW Case P03a)

1% AEP Event

Client: Roberts Bros Pty Ltd

Ref: Vel\_P03a\_0100Y



© Hydrology and Water Management Consulting Pty Ltd (HWMC) 2023.  
HWMC endeavours to ensure that the information contained in this figure is correct at the time of publication. Furthermore, HWMC makes no representations, warranties or guarantees about its accuracy, reliability, completeness or suitability for any particular purpose.

**Overlander Avenue Woolmar (Kilcoy)**

Peak Flood Velocities

Proposed Case  
(TUFLOW Case P03a)

0.2% AEP Event

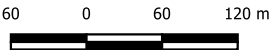
Client: Roberts Bros Pty Ltd

Ref: Vel\_P03a\_0500Y

## **Appendix C      Peak Flood Level Impact Maps**

- Legend**
- Property Boundaries
  - Roberts Bros Properties
  - 1m LiDAR Contours

- Impact (mm)**
- Less than 200
  - 100 to -200
  - 50 to -100
  - 20 to -50
  - 10 to -20
  - 10 to -10
  - 10 to 20
  - 20 to 50
  - 50 to 100
  - 100 to 200
  - Greater than 200
  - Decreased Flood Extent
  - Increased Flood Extent



© Hydrology and Water Management Consulting Pty Ltd (HWMC) 2023.  
HWMC endeavours to ensure that the information contained in this figure is correct at the time of publication. Furthermore, HWMC makes no representations, warranties or guarantees about its accuracy, reliability, completeness or suitability for any particular purpose.

**Overlander Avenue Woolmar (Kilcoy)**

Peak Flood Level Impacts  
(TUFLOW Case P03a Minus B01b)  
5% AEP Event

Client: Roberts Bros Pty Ltd  
Ref: Diff\_h\_P03a-B01b\_0020Y

- Legend**
- Property Boundaries
  - Roberts Bros Properties
  - 1m LiDAR Contours

- Impact (mm)**
- Less than 200
  - 100 to -200
  - 50 to -100
  - 20 to -50
  - 10 to -20
  - 10 to -10
  - 10 to 20
  - 20 to 50
  - 50 to 100
  - 100 to 200
  - Greater than 200
  - Decreased Flood Extent
  - Increased Flood Extent



© Hydrology and Water Management Consulting Pty Ltd (HWMC) 2023.  
HWMC endeavours to ensure that the information contained in this figure is correct at the time of publication. Furthermore, HWMC makes no representations, warranties or guarantees about its accuracy, reliability, completeness or suitability for any particular purpose.

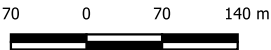
Overlander Avenue Woolmar (Kilcoy)

Peak Flood Level Impacts  
(TUFLOW Case P03a Minus B01b)  
1% AEP Event

Client: Roberts Bros Pty Ltd  
Ref: Diff\_h\_P03a-B01b\_0100Y

- Legend**
- Property Boundaries
  - Roberts Bros Properties
  - 1m LiDAR Contours

- Impact (mm)**
- Less than 200
  - 100 to -200
  - 50 to -100
  - 20 to -50
  - 10 to -20
  - 10 to -10
  - 10 to 20
  - 20 to 50
  - 50 to 100
  - 100 to 200
  - Greater than 200
  - Decreased Flood Extent
  - Increased Flood Extent



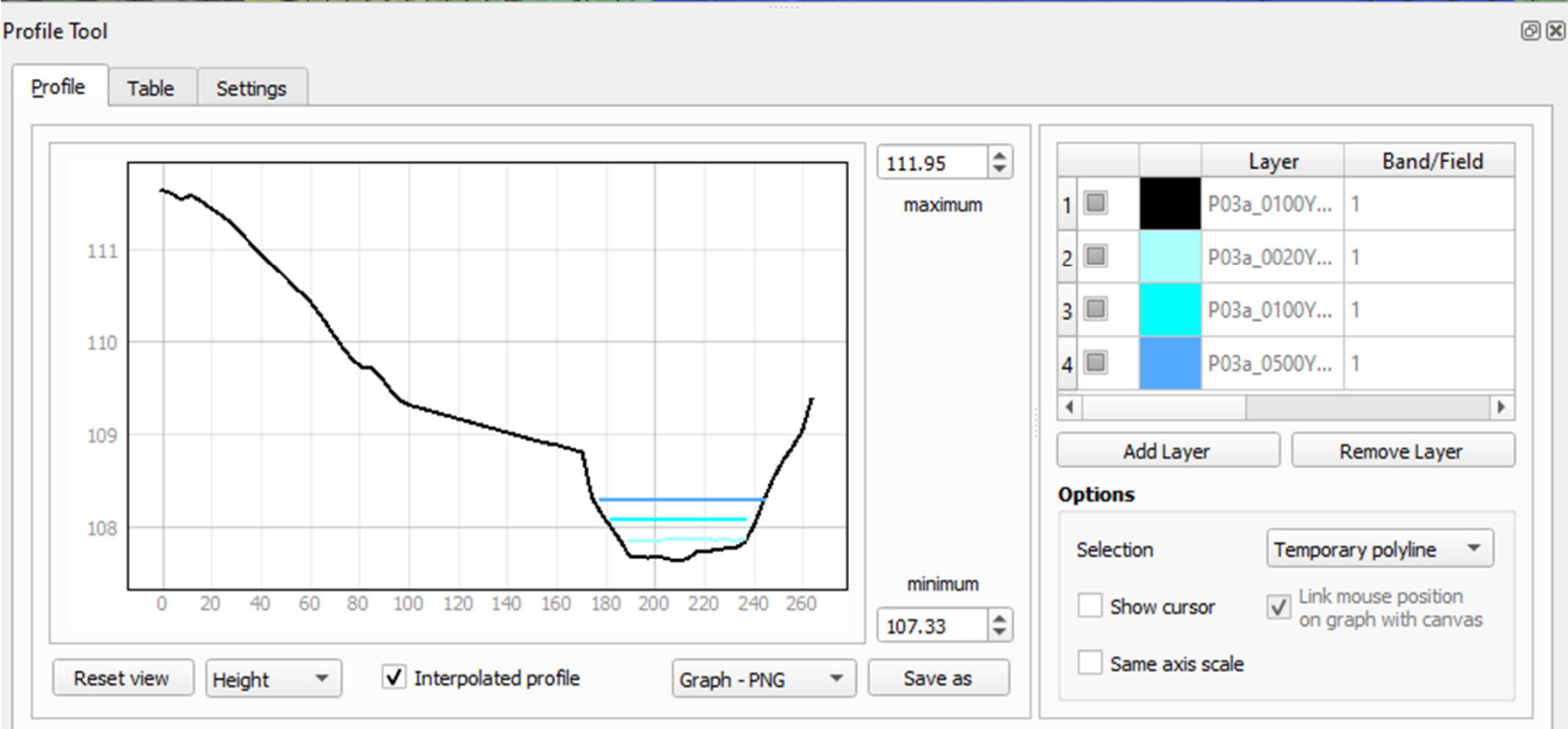
© Hydrology and Water Management Consulting Pty Ltd (HWMC) 2023.  
HWMC endeavours to ensure that the information contained in this figure is correct at the time of publication. Furthermore, HWMC makes no representations, warranties or guarantees about its accuracy, reliability, completeness or suitability for any particular purpose.

**Overlander Avenue Woolmar (Kilcoy)**

Peak Flood Level Impacts  
(TUFLOW Case P03a Minus B01b)  
0.2% AEP Event

Client: Roberts Bros Pty Ltd  
Ref: Diff\_h\_P03a-B01b\_0500Y

## **Appendix D      Floodplain Sections**



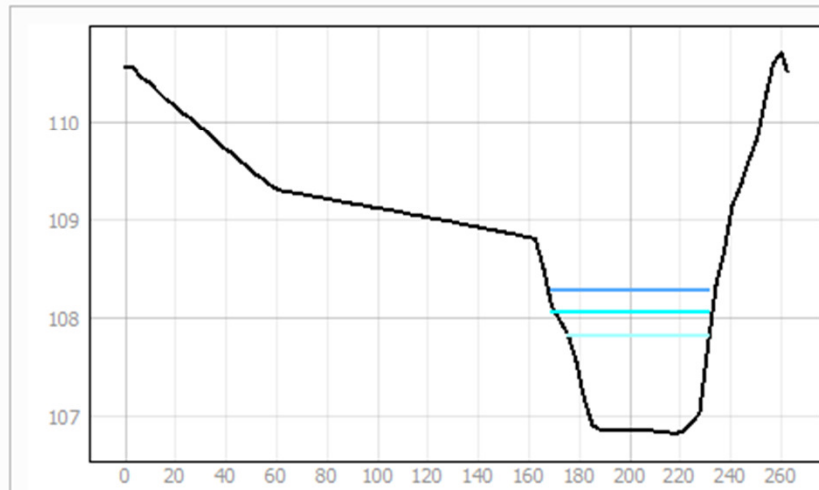
Note: All Sections drawn left to right looking downstream / south



Profile Tool



Profile Table Settings



110.99

maximum

minimum

106.55

Reset view

Height

☒ Interpolated profile

Graph - PNG

Save as

		Layer	Band/Field
1	<input type="checkbox"/>	P03a_0100Y...	1
2	<input type="checkbox"/>	P03a_0020Y...	1
3	<input type="checkbox"/>	P03a_0100Y...	1
4	<input type="checkbox"/>	P03a_0500Y...	1

Add Layer

Remove Layer

#### Options

Selection

Temporary polyline

☐ Show cursor

☒ Link mouse position on graph with canvas

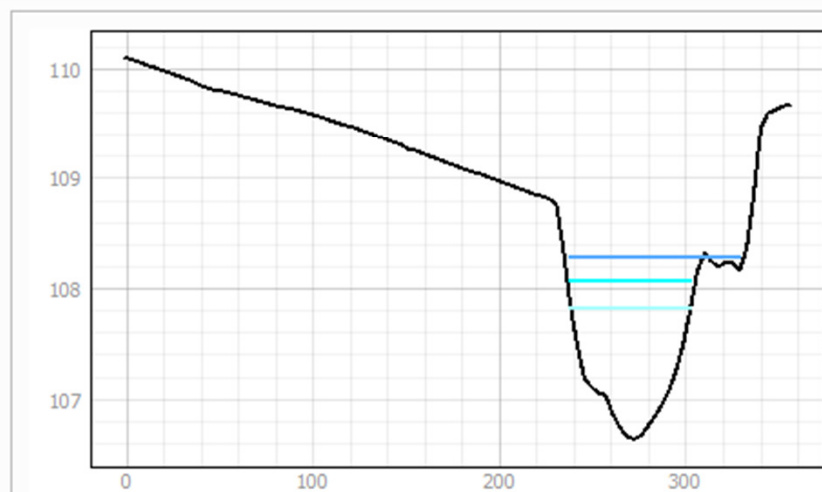
☐ Same axis scale



Profile Tool



Profile Table Settings



Reset view

Height

☒ Interpolated profile

Graph - PNG

Save as

110.35

maximum

minimum

106.39

		Layer	Band/Field
1	<input type="checkbox"/>	P03a_0100Y...	1
2	<input type="checkbox"/>	P03a_0020Y...	1
3	<input type="checkbox"/>	P03a_0100Y...	1
4	<input type="checkbox"/>	P03a_0500Y...	1

Add Layer

Remove Layer

#### Options

Selection

Temporary polyline

☐ Show cursor

☒ Link mouse position  
on graph with canvas

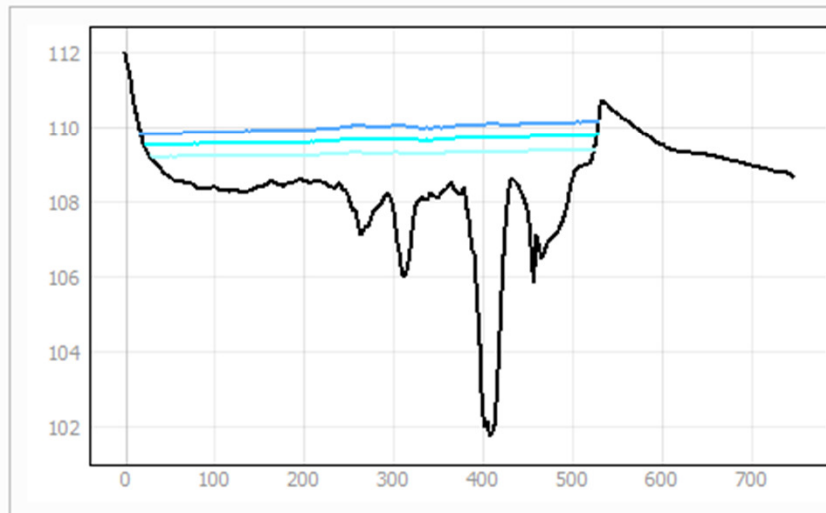
☐ Same axis scale



Profile Tool



Profile Table Settings



112.72

maximum

minimum

101.02

Reset view

Height

☒ Interpolated profile

Graph - PNG

Save as

		Layer	Band/Field
1	<input type="checkbox"/>	P03a_0100Y...	1
2	<input type="checkbox"/>	P03a_0020Y...	1
3	<input type="checkbox"/>	P03a_0100Y...	1
4	<input type="checkbox"/>	P03a_0500Y...	1

Add Layer

Remove Layer

Options

Selection

Temporary polyline

☐ Show cursor

☒ Link mouse position  
on graph with canvas

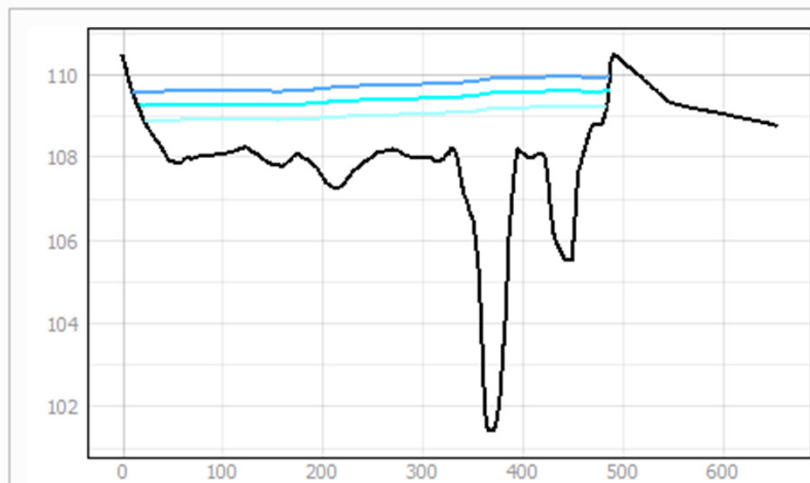
☐ Same axis scale



Profile Tool



Profile Table Settings



111.15

maximum

minimum

100.79

Reset view

Height

☒ Interpolated profile

Graph - PNG

Save as

		Layer	Band/Field
1	<input type="checkbox"/>	P03a_0100Y...	1
2	<input type="checkbox"/>	P03a_0020Y...	1
3	<input type="checkbox"/>	P03a_0100Y...	1
4	<input type="checkbox"/>	P03a_0500Y...	1

Add Layer Remove Layer

#### Options

Selection

Temporary polyline

☐ Show cursor

☒ Link mouse position  
on graph with canvas

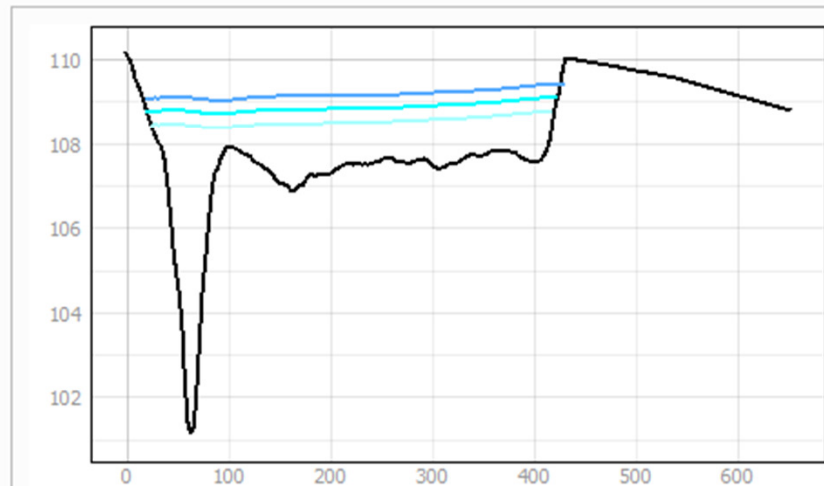
☐ Same axis scale



Profile Tool



Profile Table Settings



110.80  
maximum

minimum  
100.50

Reset view

Height

☒ Interpolated profile

Graph - PNG

Save as

		Layer	Band/Field
1	<input type="checkbox"/>	P03a_0100Y...	1
2	<input type="checkbox"/>	P03a_0020Y...	1
3	<input type="checkbox"/>	P03a_0100Y...	1
4	<input type="checkbox"/>	P03a_0500Y...	1

Add Layer

Remove Layer

#### Options

Selection

Temporary polyline

☐ Show cursor

☒ Link mouse position  
on graph with canvas

☐ Same axis scale

